

WEATHER			
	Min.	Max.	Precep.
Wednesday, June 7	61	77	0.20
Thursday, June 8	49	80	0.00
Friday, June 9	55	84	0.00
Saturday, June 10	59	88	Trace
Sunday, June 11	60	85	0.25
Monday, June 12	64	86	0.35
Tuesday, June 13	49	71	0.00

By H. K. L.

ONE HUNDRED-FIRST YEAR—No. 51

14 Pages This Week

CHELSEA, MICHIGAN, THURSDAY, JUNE 10, 1971

15c per copy

SUBSCRIPTION: \$4.00 PER YEAR

# The Chelsea Standard

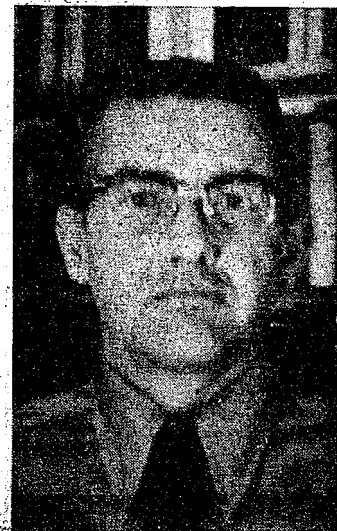
## QUOTE

"I shall never ask, never refuse, nor ever resign an office."  
—Benjamin Franklin  
1706-1790

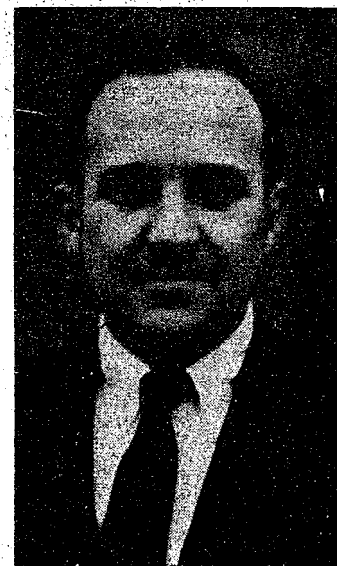
## Three Candidates Seek School Board Postions



DONALD E. BALDWIN



ROBERT N. SCHAFER



GERALD J. STRAUB

## B. Wengren Preparing for Olympic Trials

Bonnie Wengren accompanied the Wolverine Track Club to Terre Haute, Ind., this past week-end to compete in the Indiana Relays. Chelsea's swift-footed lady runner was a member of the winning mile medley team, and ran on the 440 relay team which placed sixth in the event.

She ran the lead-off 220 yards in the 880 sprint medley in :25.7, which was the fastest time tallied by her club this year, and is a second faster than she has ever run that distance before.

Bonnie's coach, John Bauer, claims that she is now within "shooting distance" for the big meets which will be coming up this year, and next summer in preparation for the next Olympic meets. Qualifying time in the 220 for the 220 for the national girl championships is :25.6, one-tenth of a second faster than Sunday's performance.

National United States Women's and Girls Championships will be held in July in Bakersfield, Calif. Girls championships will be July 6-7, while the women's events will be July 8-10. Coach Bauer hopes that Bonnie will qualify for both of these events within the next few weeks, and will be able to accompany the Wolverine Track Club when they make their trek to California in July.

Bonnie is improving very rapidly, Bauer commented, and it appears that she has completely recovered from the injuries that have plagued her all spring.

(Continued on page six)

## Election Scheduled Monday In Beach Junior High School

School Board elections, a citizen's chance to try to effect changes in the local educational system, are upon us. This year, elections will be held Monday, June 14, in the large group instruction room at Beach school. Polls will be open from 7 a.m. until 8 p.m. with a special meeting of the board to be held following elections to certify results.

Although there is no millage issue this year there are two positions to fill on the board.

Gerald J. Straub is seeking election to the four-year vacant term which will expire in 1975, while Donald Baldwin and Robert Schafer are competing for the one-year term expiring in 1972.

Straub is presently president of Superior Equipment Co. of Ypsilanti and has been active in civic affairs in both Chelsea and Ypsilanti. He recently completed a term as vice-president of the Ypsilanti Chamber of Commerce serving four years as chairman of its Education Committee. He is a past vice-president of that city's Jaycees.

He has been a frequent visitor at Board of Education meetings as he is secretary of the Agricultural Advisory Committee for the Chelsea Public Schools and was chairman of the Citizens for Quality Education.

He has served as co-leader of the Webster 4-H Farmers 4-H club, and is a member of the Wolverine Farm Bureau Group. He is secretary of the Faith Lutheran church in Dexter, where his family and he attend church.

Professionally, he is active in Body and Equipment Association, and is vice-chairman of the Garwood Distributor's Council. He is also a member of the Vehicular Safety Committee of the Trucking Michigan Trucking association, for which he has written several papers on the industry's response to the proposed vehicular safety standards.

Straub is married, and resides at 6969 Madden Rd. He and his wife, Carol, have three children, Martin, Stephen and Ellen.

Donald E. Baldwin, 1023 Freer Rd., is a candidate for the one-year term vacant on the Board of Education. Baldwin is assistant plant manager at the Mechanical Spring Plant of North American Rockwell where he has been employed for the past 20 years.

His past contributions to the community include his service as president of the Chelsea Chamber of Commerce in 1964, chairman of the Chelsea Community Chest in 1963, treasurer of the Chest, 1959 through 1961, member of the Kiwanis Club Board of Directors, 1962, Chelsea Village president, 1966 through 1968, and a member of the Village Council, 1962 and 1963.

He is also a worshipful master in the Masons and is currently Committee Chairman for Cub Scout Pack 455. He was institutional representative in 1964.

Baldwin was recipient of the Jaycees Distinguished Service Award in 1960, and has belonged to the American Society of Personnel Administrators, Ann Arbor Manufacturers Association, National Association of Cost Accountants, Washtenaw County Com-

mission for Retarded Children, and Governor Romney's Sub-Committee on Area Development. He is currently on the Board of Directors for the Michigan Spring Manufacturers.

A 1948 graduate of Chelsea High School, he attended Eastern Michigan University and took special courses from LaSalle Extension University in accounting, and the University of Michigan in business management.

He is married and the father of one son in the fourth grade. Mrs. Baldwin is a former teacher in the Jackson and Chelsea school system. She is currently a volunteer library helper at South Elementary school.

Competing with Baldwin for the one-year term vacancy is Robert N. Schafer, 1575 Pierce Rd.

Originally from Ypsilanti and Ann Arbor, Schafer has been a resident of the school district for more than 10 years, and has six children in the Chelsea schools.

Schafer is employed presently as supervisor of research, administration and facilities of the Institute for Fisheries Research, in Lansing. He has long been active in the area Army National Guard and Reserve, and has a long list of various military positions he has held within the Guard. Since 1967 he has been an instructor of the Army Command and General Staff College of the staff of the 5033 USAR school of Lansing, conducting classes in Ann Arbor, Lansing, and at Camp McCoy, Wis., in the summers.

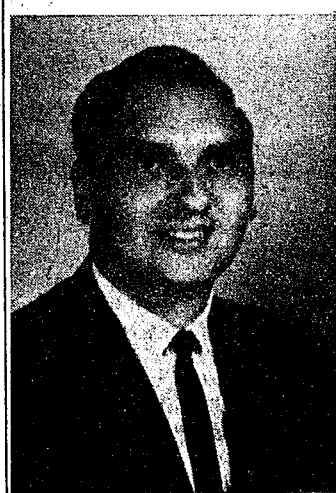
He attended the Detroit Institute of Technology, University of Nebraska and Michigan, and various military schools, including Advanced Infantry School, Ft. Benning, Ga., and the Advanced Signal School, Ft. Monmouth. He has taken the Instructors Training Course, Ft. Benjamin Harrison. He is a 1966 graduate of the Army Command and General Staff College, Ft. Leavenworth, Ka.

(Continued on page six)

## R. D. Parnells Leaving Chelsea Church of Christ Next Sunday

R. D. Parnell, minister for five years for the Chelsea Church of Christ, has resigned his work with the local congregation to accept full-time ministry with a congregation in Greenville, S. C. His ministry with the Chelsea congregation will end Sunday, June 13.

Lionel S. Burger, who has been working with the Greenville, Tenn. congregation, will replace him.



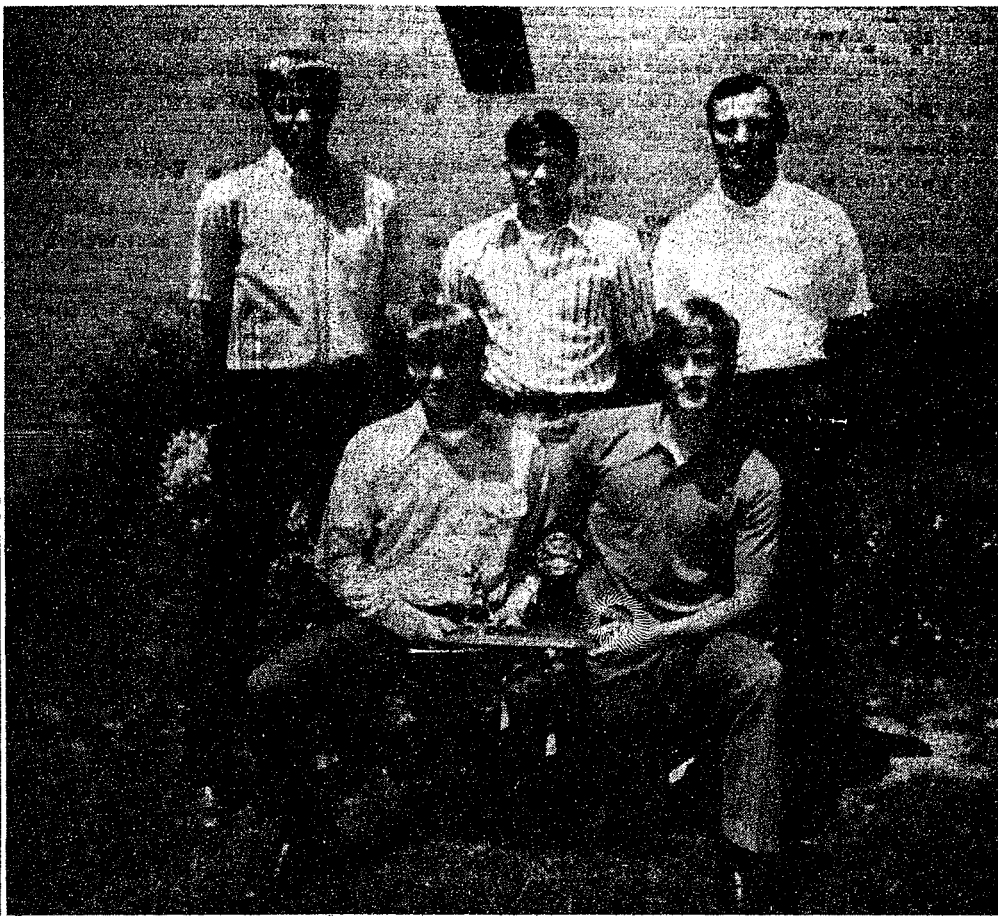
REV. FRANK C. FRINKLE

## Immanuel Church Pastor Resigns, Moving to Arizona

After nearly four years of ministry in the Immanuel Bible Church, the Rev. Frank C. Frinkle has resigned his position. The Rev. Frinkle will preach his farewell sermon June 13.

A full program to bid farewell to their pastor has been arranged by the church, to include the 9:45 a.m. and 11 a.m. services. At 3 p.m., a special meeting will feature the church's singing groups, as well as special music and testimonies from his previous churches in Ogden, and Grayling. All members of the community are invited to attend this special farewell program.

The Rev. and Mrs. Frinkle, and their son, Curt, will be leaving Monday, June 14 for Arizona, where it is hoped the climate will clear up a bronchial condition which the pastor has had for the past several years.



BULLDOG BASEBALL STARS display the trophy they carried home from Northville Monday evening, following their sound defeat of Dexter, 10-0, for the District Championship. Southeastern Conference All-League teammates chosen from the Chelsea team are, front row, Randy Brier and Wayne Welton. In the second row are, same order,

Ron Sweeney, Joe Aspiranti and Coach Carl Genske. Brier received honorable mention by the Southeastern coaches for his ability as a catcher, while Welton was named to the first team as an infielder, while Aspiranti, an outfielder, received honorable mention.

## Recreation Commission's Plans Outlined for Council

Long range objectives of the Chelsea Recreation Commission were presented to Village Council members Tuesday evening, June 1 by members of the commission's Planning Committee.

The council took action on the first of the seven proposals, which called for the rebuilding of the infield at the high school ball field, for the summer softball league.

Other future plans of the commission include making some improvements on the little league field at South school. Presently, the commission plans to grade that area, and pack the infield with the infield dirt from the high school field which was replaced.

A third proposal calls for a basic engineering survey of the elementary school sites, to have a "plot plan" drawn for areas on which to develop little league, and T-ball diamonds.

Development of all-weather asphalt, or hardtop areas at the elementary schools was a further consideration. These areas would be used for volleyball, rope skipping, basketball, and other similar activities.

The Planning Committee would also like to plan for the building of additional tennis courts in the village, although, they have not selected a site for the courts at this time.

In conjunction with the school board's proposal to develop an athletic area at Beach school, the Recreation Commission would like to add facilities for a softball field

at that school, thus removing all softball from the high school field, which would be reserved for hardball use only.

A final proposal called for the lighting of the proposed Beach School athletic field, for the purposes of evening softball leagues. That would give the community two lighted fields for baseball and softball.

According to Chelsea schools Business Manager Fred Mills, the next step which the Commission's Planning Committee would like to take would be to develop the all-weather asphalt areas at the elementary schools in the fall. He claimed that at present there are limited facilities for play at the schools in the event that there has been a heavy rain. There are no hard areas which would allow the children to play games without sinking into mud.

When asked about winter sport facilities, he explained that the Planning Committee had no proposals at present to extend present winter sport facilities in this area. They are still investigating the possibility of winter ice skating areas, though, he claimed.

## Baseball Team Wins District Championship

### Clobber Dexter, 10-0, in Finals at Northville on Home-Run Power

Bulldog ballplayers traveled to Northville this past week, and came home with the District Baseball Championship. Chelsea's team scored a total of 20 runs in the two games which they played to gain the trophy, many of those runs tallied by homers.

Meeting Northville Saturday morning, Chelsea defeated their opponents, 10-5, in nine innings. According to Coach Carl Genske, the Bulldogs trailed, 5-2, going into the seventh inning, when they finally came to life.

Ron Sweeney was first on base with a walk, followed by Welton, who also walked. A double by Mike Nadeau, scoring Sweeney, and Welton, and a single by Dave Lukasiak tied the ballgame up for the day, and the game went into overtime.

The teams held even until the ninth inning, when Chelsea went wild. Joe Aspiranti got on base on a walk. After a fielder's choice by Mike Nadeau, Dave Lukasiak walked, John Mann walked, and Tim Van Slambrouck walked, forcing Nadeau home. Randy Brier then capped off the game by hitting a grand slam home run, to bring the final score to 10-5.

Pitcher for the nine-inning game was Wayne Welton, who went all the way, Coach Genske claimed. Hitting stars for the afternoon in-

cluded Randy Brier, who clinched the game with his spectacular grand slam, and Dave Lukasiak, who was 2 for 4 for the morning.

Advancing to the District Finals, Chelsea met Dexter Monday evening at Northville, and defeated the Dreadnaughts, 10-0. Coach Genske commented: "Well, there's not much to say about this ballgame, except we beat them 10-0—with home runs!"

Ron Sweeney pitched what his coach termed a "brilliant game," allowing only two hits, and striking out six. The hits were both tallied by Jim Aseltine of Dexter, one of the better ballplayers in the area, Genske said.

Todd Sprague walked in the first inning, and came home when Wayne Welton homered for two runs.

Chelsea scored two more runs in the second inning on three hits, and one walk. In the third inning the team scored five times on a triple by Welton, a walk and a stolen base by Joe Aspiranti, a single by Mike Nadeau belted home by Welton and Aspiranti. Tim Van Slambrouck then singled, and Randy Brier hit a three-run homer to bring the number of Bulldog runs to nine.

Final run came in the fourth inning when Joe Aspiranti hit a solo home run.

## More Awards For Seniors

Omitted from the list of seniors Wednesday evening, June 2, at the annual "Class Night" ceremonies were Jill Kipfmiller, Patrick Pluck, and Sharon Heydlauff. Miss Kipfmiller was the recipient of a scholarship from Kalamazoo College, while Pluck, and Miss Heydlauff were dual winners of the "Outstanding Senior in Speech" award, presented by William Coelius.

Jill Kipfmiller also was awarded a one-year complimentary subscription to the Reader's Digest for her academic performance in high school. She has the highest scholastic average in the class.

Following Class Night activities, it was learned that Janice Guenther was awarded a scholarship from Michigan State University for academic excellence.

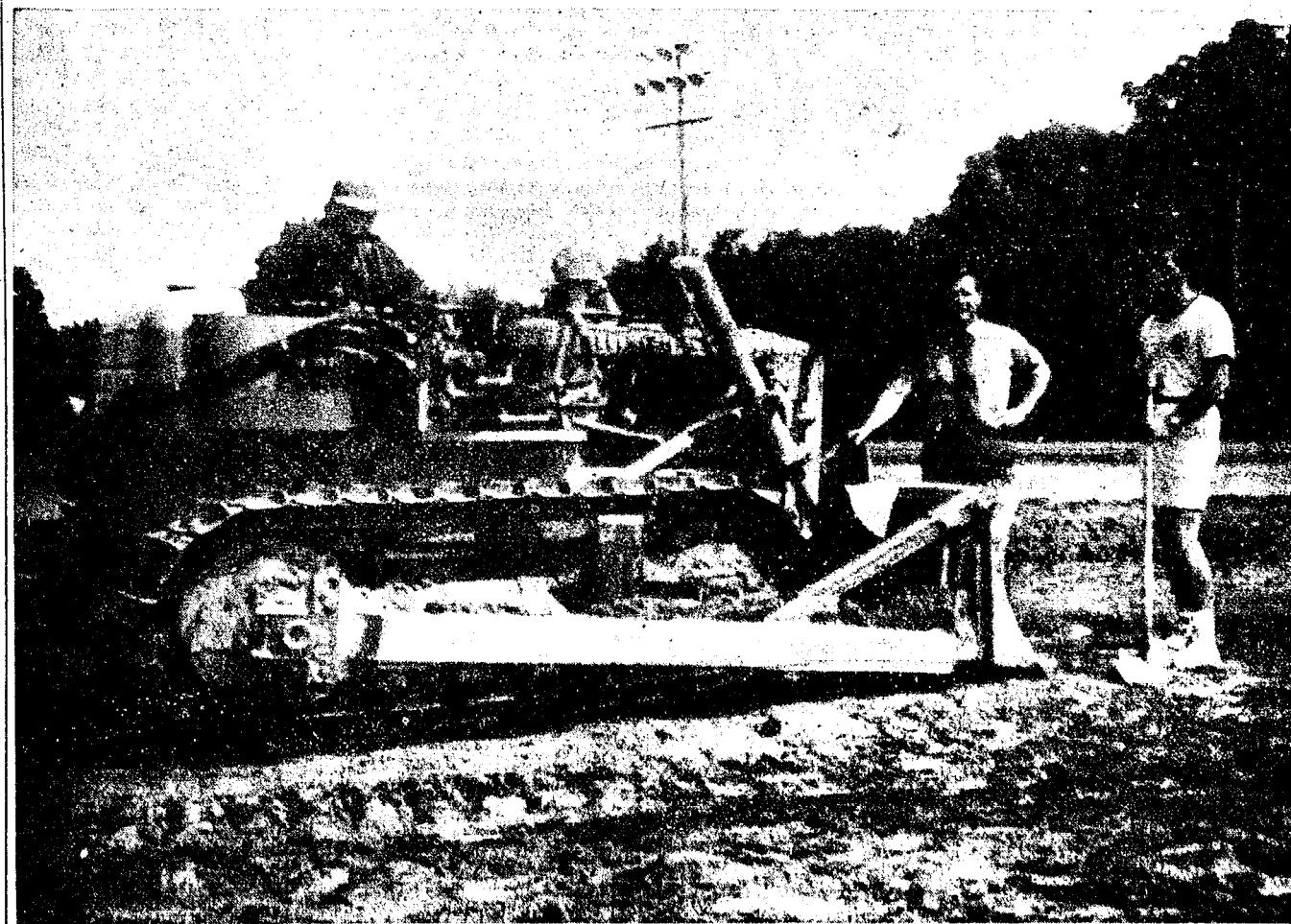
Raylene Buckingham received a scholarship from the Alexandra School of Cosmetology to attend that institute.

Chelsea will go back to Northville Saturday, to compete for the Regional Championship. The Bulldogs play Flat Rock at 10 a.m., and the winner of that game will play the winner of the Marysville-Detroit Lutheran West game at 3:30 that afternoon.

Season record for Chelsea is now 15-5.

Mrs. Wesley Ellenwood, her son, Terry, and Brenda McGuire, all of Chelsea, and Linda Edwards, of Lansing, attended the graduation ceremonies of Gary Ellenwood Sunday afternoon, June 6, at Northwestern Michigan College, Traverse City.

Frank Reed is in St. Joseph Mercy Hospital, room 454, bed 1.



SOFTBALL DIAMOND RESURFACED: Pitching in to assist with the construction of the new infield for the softball diamond at the high school is Dick Kiss, atop his bulldozer, Fred Mills, Chelsea Schools Business Manager, and Bulldog baseball coach, Carl Genske. Mills is a member of the planning committee for the newly-organized "Chelsea Recreation Commission," which is sponsoring the project. Genske was on hand to give thoughtful

advice on the subject. The new infield will be completely covered and packed down with "flume dirt," a special combination of clay and sand, which is used to cover the infields of all the ball parks in Ann Arbor. This is the first of many recreational improvements which the Recreation Commission hopes to effect within the next few years.





## Washington Report by Congressman MARVIN L. ESCH

When Congress passed the Gulf of Tonkin resolution seven years ago (which has since been repealed), it marked the beginning of the latest struggle between the legislative and executive branches of government over the way this nation becomes embroiled in an undeclared war, a point, incidentally, on which the Constitution is ambiguous. (The failure of our country to devise a national means to prevent situations like Vietnam has turned the undeclared war into a Presidential War. Presidents have followed the inclination to ignore Congress, marching the Nation into grave national commitments. On the surface such a policy has expanded Presidential powers. In reality it has actually done the man who occupies the White House oval office more harm than good. In fact, no single event in modern history has done more to undermine the office of President.)

Congress should foresee its passive role in foreign affairs and start to function as an equal partner with the President in determining military policies. The idea of a creative partnership that neither jeopardizes national security nor ties the hands of the President is a procedure that should be welcomed by every public official, and every citizen of this land.

I have joined in introducing a bill that asserts the Constitutional role of Congress. It establishes the machinery whereby the President can keep Congress informed either prior to or within 24 hours after he takes military action. The President is still in position to safeguard information vital to the success of any action or the safety of our troops. My proposal creates a Joint Committee on National Security that would bring together the leadership of the Congress and the authoritative Members of the foreign and military affairs committees.

The thrust of the bill is not to hamstring the President. It is aimed at clarifying the obligations of the Executive and Legislative branches of government when the Armed Forces of the

United States are engaged in hostilities. It is not a power play by Congress—it is simply a reassertion of the responsibilities which the Congress saw fit to abandon within the last decade.

The new committee would be designated by Congress as the panel authorized to consult with the President and his national security advisers in situations where congressional powers are involved and where congressional ratification of military actions is required. This joint committee must transmit its reports pursuant to the provisions of the bill to the appropriate committees of both Houses, which would be responsible for drafting and reporting to the House and Senate legislation to ratify or change the President's actions. No similarly organized procedure now exists.

I intend to do everything within my power to persuade my fellow members of Congress to fill this vacuum. In my opinion this legislation would be of immense value and the American people would feel they have, through the Congress, had a voice in the vital decisions of war and peace.

## Wool Program Referendum Set June 7-18

The Secretary of Agriculture has called a national referendum of sheep producers for the period of June 7-18. The purpose is to confirm for the secretary whether or not sheep producers want to continue their promotion program for another four years, through 1974, as it is conducted by the American Sheep Producers Council. This program for lamb and wool throughout the nation is given approval if a "yes" vote is cast by more than two-thirds of the individual producers owning more than two-thirds of the sheep represented in the referendum by those voting.

The American Sheep Producers Council was organized in September, 1956 by sheepmen throughout the United States. Its purpose was to promote the two principal products of the sheep industry—lamb and wool. This is done through advertising programs in radio, newspapers, trade and consumer magazines, recipes, movies, special promotions, and Make It With Wool and Miss Wool of America programs, cutting demonstrations, contracts with military institutional and retail sales, merchandising and market analysis and the Sheep Industry Development Program.

Monies for this program come from the incentive payments the producers receive. The incentive payments are made possible from the import duties on imported wool. One and one-half cents for each pound of shorn wool and seven and one-half cents for each 100 pounds of unshorn lamb sold are deducted from each sheepman's payment.

A "yes" vote means that you are in favor of continuing the program and a "no" in favor of discontinuing the program.

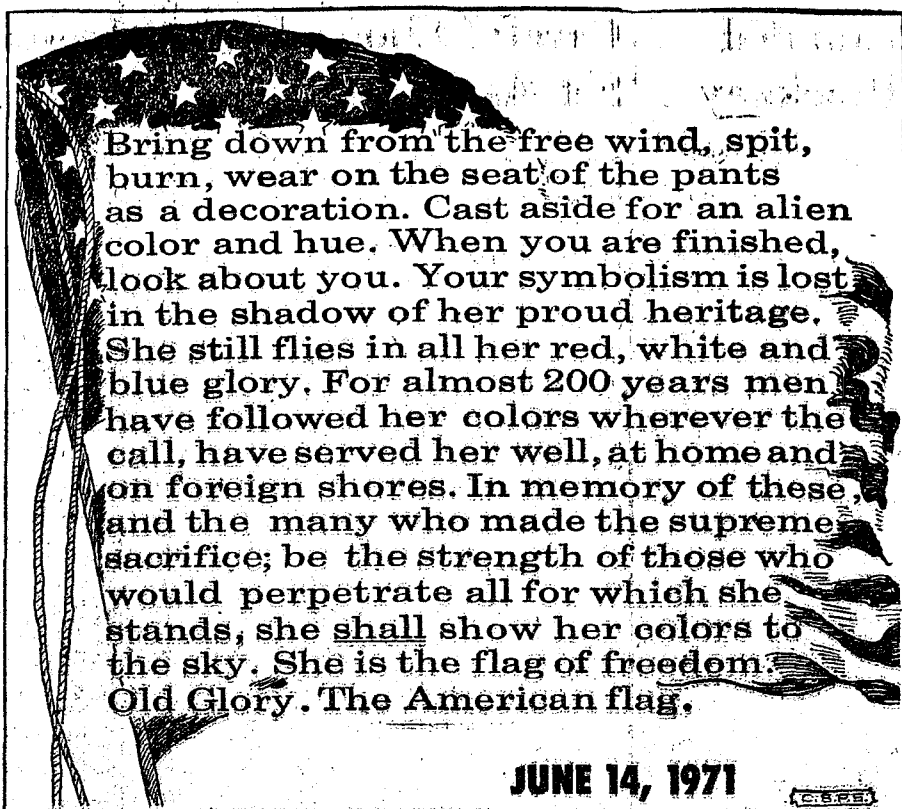
All sheep producers and feeders are eligible to vote who have owned sheep or lambs six months of age or older, for at least 30 consecutive days during 1970. The ballots will be mailed to producers from the County Agricultural Stabilization and Conservation Service. Those sheepmen who didn't receive incentive payments may obtain ballots from ASC office.

## Med. School Enrollment Increases at MSU

East Lansing—A total of 115 new medical students will enroll at Michigan State University next fall, an increase of nearly 65 percent over present first-year enrollment.

The College of Human Medicine will admit 83 students, up from 45 last fall, and the College of Osteopathic Medicine will enroll 32, an increase from 25.

In spite of the increased enrollment, only one out of 15 applicants could be accepted.



JUNE 14, 1971

## ★ MICHIGAN MIRROR ★

By Elmer E. White, Secretary, Michigan Press Association

### ZPG Support Grows

The idea that the world must stop the increase in its population and achieve a state of Zero Population Growth (ZPG) is looking more and more like an idea whose time is arriving.

Where it once was talked about only in a few circles, the concept is picking up more and more backers in places where something can be done about it.

Among the newer advocates of ZPG are the members of Gov. William G. Milliken's Advisory Council on Environmental Quality. The council, in fact, recently told Milliken he ought to put together a team of experts and give them the responsibility of drawing up a program through which ZPG could be achieved in Michigan.

As man learns more about disease and what can be done to combat it; and as the wide open spaces become more and more congested, actively working to control births becomes the only way left to prevent overcrowding, the council said.

"Most animal populations util-

ize migration and high death rates to serve as population controls," it said. "Human populations are no longer utilizing either of these two mechanisms. Population can only be obtained through the regulation of the number of births per family unit in human society."

And it said the goal of ZPG must be adopted as soon as possible since it could be 70 years before ZPG became a reality after it was adopted as a goal. That's because it wouldn't occur until the number of deaths equal the number of births in a given year, and that won't happen until today's babies reach old age.

"We will have Zero Population Growth," said one scientist recently. "It's just a matter of using man's intellect to achieve it or leaving it to the traditional population controls: war, starvation, disease, pestilence. We must take our choice."

Two changes must be made in man's thinking if ZPG can become a reality by using our brains, say the council.

The desired size of families must

be reduced. It said large families traditionally have been desired "because of the uncertainty that any one child will survive to adulthood, because of the value of children as old age security to parents, and because of the economic value of children as income producers for the family." But it said all three reasons for wanting a large family "no longer prevail in modern American society."

Social pressures to marry and have a family must be reduced. For those who already are affluent, "larger families can be made an economic liability by increasing the incentives for and the costs of advanced education for their children," it said.

The council concludes "an unescapable trade-off exists between quantity of people and quality of life. The cost of retarded responses to the population crisis will be measured in a reduction in the quality of life."

The same analysis of the situation came recently from an entirely different perspective—Nobel Peace Prize recipient Dr. Norman Borlaug, Dr. Borlaug, who won the peace prize for his work in increasing the world's food supply, said his work is being nullified by the population explosion.

"With our current situation, every time you make gains in food production, the monster—population growth—reaches out and destroys everything you've done," Borlaug also had a warning for those who don't like the idea of endorsing ZPG.

He said it will be achieved sooner or later and that if it isn't sooner, one of the first casualties of continued population growth will be democracy.

"I feel population control will be achieved sooner or later," he said. "Hopefully, it will be achieved sooner and hopefully it will be decided on democratically. If not, it will be later and it will be decided by a government under disaster conditions. It is a decision that must be made."

**Licenses Change**  
If you hate to show anyone your driver's license because of that awful picture of you that was taken when you got it, there's hope for a better future.

As of June 1, Michigan drivers began receiving a new, all-plastic license which Secretary of State Richard H. Austin says has several advantages, one of which is a better photo.

"Many Michigan drivers will be happy to learn that this new process should produce clearer, larger, sharper and more professional photos," he said.

That's not the reason it was adopted, however. Austin also said the new license is next to impossible to alter in any way since all the writing and the photograph are contained in the plastic.

The new licenses are being phased in as old licenses expire, meaning it will take three years before all Michigan drivers have one.

Yours truly,  
Uncle Lew.

## Uncle Lew from Lima Says:

### DEAR MISTER EDITOR:

The fellows at the country store got to looking for good news Saturday night, and they came up with a pretty good report. They studied the May postage hike up one side and down the other, and they couldn't find much to be happy about, special for you fellows in the newspaper business.

Clem Webster said he couldn't see how papers make a go of sending folks news by mail. With the paper rate going up 20 percent in May, and more of a 142 percent increase over five years to come, Clem said papers soon will come out ahead paying people not to subscribe by mail.

But Zeke Grubb was able to look to see one candle in the dark. He said now that the postal service is a private outfit, maybe they could help the papers out by paying for some of the advertising they've been getting free all these years, special since they got competition now in parcel delivery. And if the papers have to cut back, Zeke said, they allus can leave out all them ads about savings bonds and Government services that run free.

And good news was heard about the Army, where they was plans to spend \$24 million on paid newspaper ads to get people to join.

### MSU Tops Big 10 In All-Sports Race

East Lansing—Michigan State has won the 1970-71 Big Ten unofficial all-sports championship, winning team titles in five of the 13 sports sanctioned by the conference.

The Spartans were first in cross country, fencing, hockey, wrestling, and baseball during the year.

### Potato Lover

East Lansing—Robert Luescher, a Michigan State University graduate student, recently ate 88 pounds of potatoes in 22 days to show they had plenty of usable protein and aren't fattening. He gained four ounces, remained healthy, and still likes potatoes.

## MONEY TROUBLE? ONE PLACE TO PAY!

Credit Management  
Service  
662-2565  
215 South Fifth Ave.  
Ann Arbor  
State Licensed and Bonded

Final, Zeke was glad Paris police won't let folks use field glasses to watch a play with naked actors, but he wondered why its again the law to watch closet up but not far away.

## JUST REMINISCING

Items Taken from the Files of The Chelsea Standard

### 4 Years Ago...

Thursday, June 15, 1967—Jay Hopkins defeated three other candidates to win a seat on the Chelsea School Board in the election held Monday, June 12. Hopkins was opposed by James Shadoan, Thomas O. Stock, and Edward E. Lewis.

New officers for Knights of Columbus Council No. 8092 announced this week are the Rev. Fr. Francis Maliszewski, chaplain; William Harvey, grand knight; N. L. Merkel, deputy grand knight; Dennis Guinan, chancellor; Larry Dann, recorder; and Maynard Poertner, treasurer. Others elected are Harold Warren, advocate; outside guard. Elected to the George Atkinson, warden; John board of trustees are Leo Guinan, Cook, inside guard; L. D. Laier, three years; L. D. Guinan, two years, and George Merkel, one year.

A farm owned by Leigh W. Beeman, of 16610 Waterloo Rd., has been designated a Centennial Farm by the Michigan Historical Commission. The farm, located in Lyndon township, had been in the possession of the family since 1865. It was originally purchased by Washington Beeman, Leigh's great-grandfather, from Elijah and Lucy Morgan.

Sergeant William E. Petsch, was awarded the rank of Sergeant First Class on April 27 by his battalion and battery commanders, Lt. Col. McDaniels and Capt. Sitnick. He is presently serving with Battery D, 6th Missile Battalion, 59th Artillery, APO New York. His family resides with him in Mainz, Germany. They are due for rotation back to the States in August. Sergeant First Class William E. Petsch is the son of Mrs. Ruth Petsch of Old US-12, and the late Adolph Petsch.

### 14 Years Ago...

Thursday, June 13, 1957—Leon Marsh was the successful candidate in Monday's school board election. He was elected a member of the Board of Education for a three-year term. Following certification of Marsh's election, the board for the coming year met and re-elected Dr. J. V. Fisher, president; Howard Flintoff was re-elected; and Earl Beeman was named treasurer, the post held by William G. Kolb, whose term as a board member expired this year. Dudley Holmes and the newly-elected Marsh complete the five-man board.

John E. Lee, lay vicar of St. Barnabas Episcopal Mission, will have his final service here on June 16, after which he will leave to become fulltime director of the Department of Boys Work of the Diocese. He will be working out of the Diocesan office in Detroit. The Rev. Richard Cockrell will arrive in Chelsea, and take over St.

Barnabas Episcopal Mission on July 1. Harvey Lixey, received a total of 212 votes to re-elect him president of UAWCIO Amalgamated Local Union 437 at the election held Thursday in the Union Hall. Others elected are Mac Packard, vice-president; K. R. McManis, financial secretary; treasurer, Al Kaiser and Charles Patrick; trustees for four years: Arnel Minix, guide, and Premon Boyer, sergeant-at-arms.

Cited for being the most representative boy of the class of 1957 was David Wolfgang, while Joanne Chidotti was announced most representative girl. Announcement was made at recent class night ceremonies held at Chelsea High school.

### 24 Years Ago...

Thursday, June 12, 1947—Three young people from Chelsea are candidates for degrees from the University of Michigan, Margaret J. Harper, Bernard Patrick Lyons, and Jean Catherine Sorensen. Miss Harper is the daughter of Mr. and Mrs. Walter A. Harper. She is a candidate to receive her master of arts degree. Lyons is the son of Mr. and Mrs. Harry Lyons, while Miss Sorensen is the daughter of Mr. and Mrs. E. B. Sorensen. The latter two are candidates to receive their bachelor of arts degrees.

Dave Slane, son of Charles P. Slane, has been chosen to be a member of the two-week State High School Chorus conducted by the University at the National Music Camp, at Interlochen.

Donald Hatley, son of Mr. and Mrs. Fred Hatley, and Jack Winans, son of Mr. and Mrs. Elmer Winans, are the eighth and last members of their immediate families of brothers and sisters to graduate from Chelsea High school. Both were members of this year's class. In addition, Jack Winans' parents are also graduates of Chelsea High school.

At the 50th anniversary of the Chelsea High School Alumni Association, 438 persons were in attendance. Miss Nina Greening, president of the Association, introduced guest teachers at the speaker's table. Guest teachers were Mrs. Alexander G. Ruthven, Miss Maude Haggle, and Mrs. Edith Shaw Elsworth. The oldest living graduate of Chelsea High school was Edward Hoag of Jackson. A short business meeting was held, with election of officers resulting as follows: Alfred D. May, president; Rens Walworth, secretary; Rosemary Hummel, treasurer. All six remaining members of the class of 1897, the "jubilarians," were present for the occasion, Lina Lighthall Miles, Ann Arbor, Minnie Schumacher, Marie Bacon Schneider, May Wood Luick, Elvira Clark-Visel, and Lilian, Gerald Hoppe. Other graduates of more than 50 years ago included Dr. A. A. Gulde, Class of '95, Dr. A. L. Steger, and George Taylor, Class of '96; and Edward Hoag, Class of '81.

### 34 Years Ago...

Thursday, June 10, 1937—Eighth grade commencement exercises of St. Mary School will be held Friday evening. Members of the class are: Mary Jane Doll, Jean Roy, Jean Garraher, Frances Presenale, William Radamacher, Roberta Dorer, Albert Ottomian, Richard O'Hara, and William Birch.

Approximately 200 attended the 42nd annual banquet of the Chelsea High School Alumni Association held Friday evening at the school gymnasium. Greetings to the senior class were given by L. Dean Hall of Detroit. Edwin Schenk, Class of '37 gave the response. New officers elected are Mrs. M. W. McClure, president; Mrs. W. H. Kusterer, vice-president; Elwin Hulse, secretary; and Donald J. Dancer, treasurer.

The Board of Education and Supt. H. L. Bleeker, have announced the members of the faculty for the year 1937-38. The only two new teachers are Charles Cameron and Miss Jesse Neil.

Roy Ives received a BS degree in business administration from the University of Arizona on June 2.

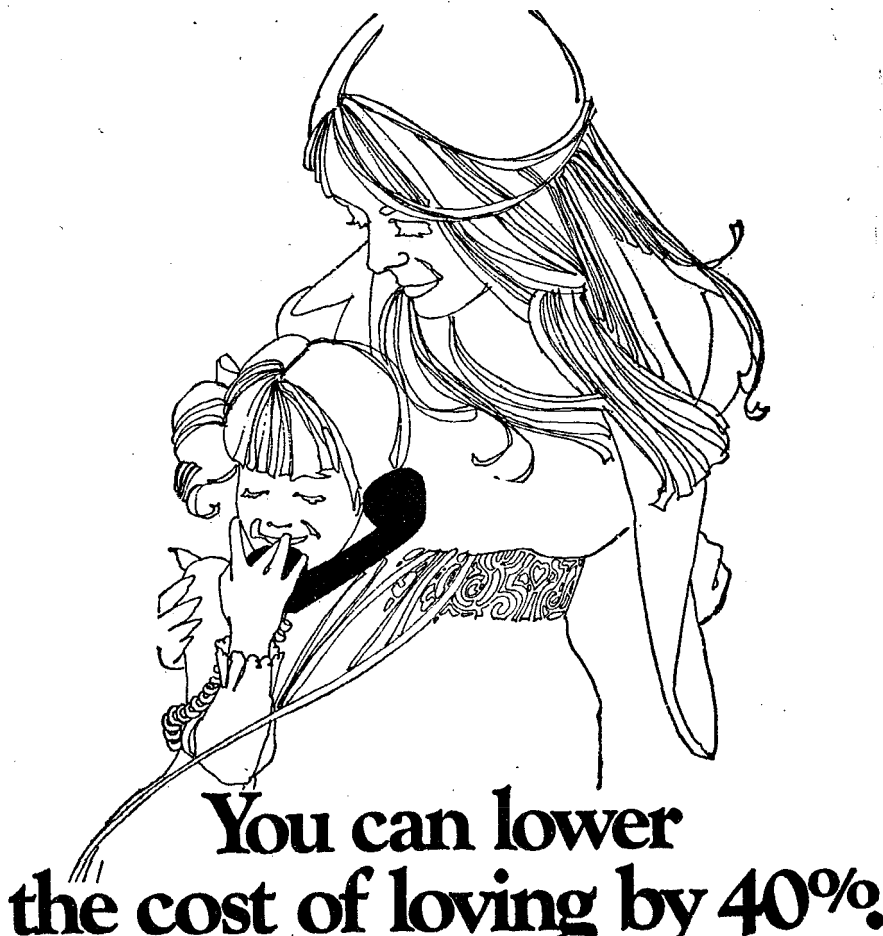
## WINANS OPTICAL

DAVID WINANS, PROP.

(Formerly with Johnston Optical Co.)

114 N. Main St. (In Sylvan Hotel) Phone 475-1233

EYE GLASSES PRESCRIPTIONS FILLED  
REPAIR SERVICE  
QUALITY FRAME SELECTION



You can lower the cost of loving by 40%.

Now get a 20 or 40% discount everywhere, everytime you call long distance within Michigan. Just dial direct.

There's a little love out there... You'll make two people happy all too infrequently.

Why not make a change, with an unexpected call? You'll make two people happy... someone you love, and you.

And now you can call anywhere in Michigan weekdays after five, and weekends from five p.m. Friday till five p.m. Sunday, and save 40%, just by dialing direct!

Or dial direct any other time and save 20%.

As always, there's no quicker or more personal way to say "I love you" than by phone. So, if you want to make two people happy... don't hesitate to call!

Here's how to direct dial long distance and save

Mon. thru Fri.	Sat.	Sunday
7 AM TO 5 PM	20%	40%
5 PM TO 7 AM	40%	20%
7 AM TO 5 PM	40%	40%

Discounts also apply to station-to-station calls in areas where direct dialing is not yet available.



Established 1871 The Chelsea Standard Telephone GR 5-3531

Excellence Award By Michigan Press Association  
1951-1952-1960-1964-1965-1966  
Walter P. Leonard, Editor and Publisher

Published every Thursday morning at 800 North Main Street, Chelsea, Mich. 48118, and second class postage paid at Chelsea, Mich., under the Act of March 3, 1879.

ADDRESS CORRECTION REQUESTED

Subscription Rates (Payable in Advance)  
In Michigan: One Year \$4.00, Six Months \$2.25, Single Copies \$ .15  
Outside Michigan: One Year \$6.00, Six Months \$3.50, Single Copies \$ .20  
Service men or women, anywhere, 1 year \$4.00

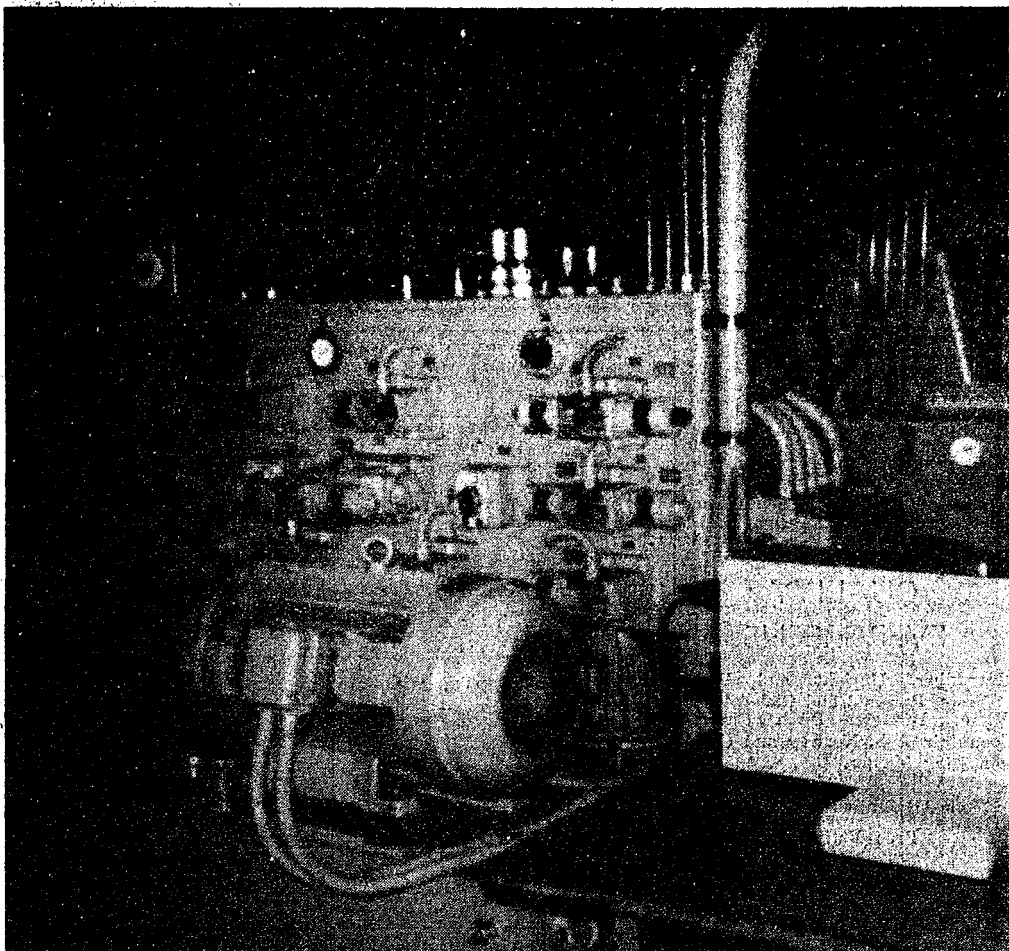
MEMBER  
NATIONAL ADVERTISING REPRESENTATIVES  
MICHIGAN NEWSPAPERS, INC.  
267 Michigan Ave.  
East Lansing, Mich. 48829

## IF YOUR ROOF IS HURTIN' Call Burton!

- ★ Old and New Roofs
- ★ Hot Tar and Metal Roofs
- ★ Aluminum Siding
- ★ Aluminum Awning and Storm Doors and Windows
- ★ Seamless Aluminum Eaves Troughs and Down Spouts
- ★ Mobile Home or Trailer Skirting

COOPERATIVE  
ROOFING & SIDING CO.  
Call 662-5900 or 662-3288  
Evenings Call Burton Rathbun, 663-0754





**NEW GEAR CUTTING MACHINE:** Dana's unique new hobbing machine is the first of its kind in the country. Made in Western Germany, the machine is designed to use solid carbide gear-cutting tools. Dana officials claim it will enable them to produce gears six times faster than their present facilities.

## Dana Installs New High-Speed German Built Hobbing Machine

A West German-made hobbing machine, the first of its kind in the nation, has arrived at the Chelsea Dana Corp. plant on Sibley Rd. The machine, a Pfauter RA200 hobbing machine, is designed to use solid carbide gear cutting tools, and will enable Dana to produce gears six times faster than their present facilities.

Designed through the co-operation of the Dana Research and Development team, the Chelsea plant's manufacturing and engineering staff, and the H. Pfauter product engineering staff, the machine is sold in this country through the Fellows Gear Shaper Co., of Vermont.

According to Dana officials, the machine is unique in that it has hydrostatic bearings, and direct current (DC) motor, giving an infinite number of variable speed ranges to produce more accurate and higher quality gears.

For example, the new machine will cut 800 to 1200 rpm, using a solid carbide hob, cutting two gears in 1.116. Present hobbing machines used by the company cut at 200 rpm, use high speed steel hobs, and cut the same two gears in 5.20.

At present the company expects

## 3 Wounded In Pinckney Family Hassle

What began as a harmless-sounding call to handle a car fire ended Friday afternoon with three people wounded: a Hudson-Mills Park Ranger, a Washtenaw County Deputy Sheriff and a woman who now stands accused of assault with a deadly weapon and attempt to commit murder.

At 5:30 p.m., Friday, June 4, Richard D. Foster, of Chelsea, Hudson Mills Park Ranger, and Jim Holmes, Pinckney Recreation Area Park Ranger, went to 8738 Glenwood, Pinckney, to investigate what was reported to be a car fire.

They arrived on the scene and found Vivian Marie Ballinger of that address standing in the driveway with a knife in each hand. As the officers approached she yelled obscenities and is quoted as having said "I'll kill you if you try to get me."

As Ranger Foster tried to talk her into putting the knives down she refused and threatened further, stating that she was going to burn down the house and burn the car.

At this point the accused lit some paper and attempted to set fire to the automobile gas tank.

The rangers continued trying to talk her into putting the knives down at which point they said she threw one knife at Jim Holmes. Ranger Foster stepped in to deflect the throw and in so doing was stabbed in the back left shoulder area by the Ballinger woman.

Chief Park Ranger Don Stewart arrived and helped remove Foster from further danger. He radioed for assistance from the Washtenaw County Sheriff's Department and police from Pinckney, Chelsea and three units from the Washtenaw County Sheriff's Department and one from the Livingston County Sheriff's Department responded. Upon arrival all of the officers tried to talk her into surrendering the knife to which she reportedly replied "I'll kill all of you" and used more obscene language.

Next the officers approached from the side and rear in an attempt to subdue the accused. In so doing Sheriff's Deputy John Steigerwald received a deep stab wound in the right leg. During the scuffle the woman made a pass with the knife and accidentally stabbed herself in the right leg.

The wounded officers and the accused were taken by ambulance to St. Joseph's Hospital. Mrs. Ballinger was treated and released to the County Jail. Ranger Foster and Deputy Steigerwald were treated and released in fair condition.

The Ballinger woman was accused of assault with a deadly weapon and attempt to commit murder. She was arraigned the night of June 4 and held on \$25,000 bond. On Monday, June 7 she was also arraigned and ordered to stand for examination in Circuit Court in Ann Arbor on Friday, June 11.

Officers report the woman's husband was in the house during this time where he had retreated when she threatened him with the knives before the officers arrived. It was reported the episode stemmed from the serving of divorce papers on the accused that morning leading the Ballinger woman to threaten her husband and threaten to burn the house and car.

When a hurricane, flood, earthquake, fire or other catastrophe strikes, the Salvation Army is often first on the scene. It maintains a constant standby network of services, ready to mobilize food, bedding and furniture from nearby communities, states or territories. It performs tasks such as writing letters or telegrams for victims and reuniting children with parents, and serving hot meals, sometimes around the clock.

## Careful Choice Urged on Acres Set Aside for Farm Programs

Washtenaw county farmers enrolled in the feed grain or wheat programs are being reminded that the acreage set aside under each program should be as productive as the acreage normally used to produce the crop.

Raymond Gimbach, chairman of the Washtenaw County Agricultural Stabilization and Conservation (ASC) Committee, also advised farmers that their set-aside land must be acreage that was either in non-conserving crops planted for harvest last year or was used as diverted acreage under the farm programs last year.

He suggested that producers who have any doubt about whether their proposed set-aside acreage will meet the qualifications should check with the county ASC office as soon as possible.

Gimbach pointed out that at the time producers come into the county office to certify their set-

aside acreage, they must specify precisely where the set-aside acreage is located. Final dates for certification are: June 15 for wheat and July 1 for corn.

After a producer has certified, if a mistake is found in his set-aside acreage he could lose some or all of his farm program payments.

"A farmer who is not quite sure whether his set-aside meets all requirements would be well advised to check with the county ASCS office ahead of time. Also, he can request measurement service, which, if followed, will give him a guarantee that he has enough set-aside acreage. Measurement service is offered by the county ASCS office at cost," Gimbach said.

Producers in the voluntary feed grain and wheat programs for 1971 set aside a percentage of their land to conserving uses, and

## Permanent Press Treatment May Soon Be Available for Home Seamstresses

A new patented process for permanent press apparel may eventually be available to the home sewer, according to Bernetta Kahabka, clothing and textiles specialist for the co-operative Extension Service of Michigan State University.

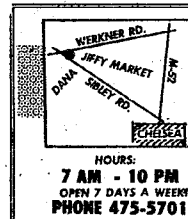
With this process, the finished garment is treated only after it is cut, sewn, pressed and ready to wear. All components such as zippers, pockets, thread and trimmings are treated at the same time, taking on the permanent press characteristics of the fabric, she says.

The system uses a vapor treatment applied to finished garments in a gas chamber, the specialist explains. A vapor of formaldehyde and sulfur dioxide gases permeates cellulosic fibers for about 20 minutes.

The process is said to give a permanent press characteristic to 100 percent cotton without reducing its abrasion resistance, and is applicable to both knits and weaves.

It is predicted that the equipment for this do-it-yourself durable press process will be installed in neighborhood stores to service the vast, flourishing home sewing market.

Telephone Your Club News To GR 5-3581



# Jiffy market

BIG ENOUGH TO SERVE YOU.....SMALL ENOUGH TO KNOW YOU!

Corner of SIBLEY & WERKNER RDS....CHELSEA, MICHIGAN

SALE PRICES EFFECTIVE THURSDAY, JUNE 10, THRU SUNDAY, JUNE 13, 1971.

**Store Hours Are 7 a.m. to 10 p.m. 7 Days A Week**

U.S.D.A. CHOICE <b>CHUCK STEAK</b> 69¢ lb.	LEAN, TASTY <b>HAMBURGER</b> Ground fresh daily. 69¢ lb.	TRY SOMETHING DIFFERENT! <b>FROG LEGS</b> 89¢ lb.
--	---	---

OLD FASHION SMOKED, LEAN <b>SLAB BACON</b> Rindless. Sliced Free. 59¢ lb.	SMOKED PORK SHOULDER <b>PICNICS</b> 43¢ lb.	Ideal for Parties, Sandwiches <b>TURKEY ROLLS</b> 4 to 5-lb. average. 95¢ lb.
--	---	--

**RISDON'S TOP QUALITY HOMOGENIZED**  
**1/2 gal. 49¢ MILK gal. 88¢**

LOUIS SHERRY <b>WILD STRAWBERRY PRESERVES</b> 1 3/4-Lb. Jar 59¢	10 Delicious Flavors <b>JELL-O</b> 3-Oz. Pkg. 9¢	An Old Family Favorite <b>SUNSHINE CHEEZ-IT</b> 10-Oz. Pkg. 39¢	MAXWELL HOUSE <b>Instant Coffee</b> 2-Oz. Jar 29¢ 6-Oz. Jar 79¢
--	---	--	--

**FREE!**

Carton of  
**50 BOOK MATCHES**

With Purchase of Each

**CARTON OF CIGARETTES**

Your Favorite Brand at Our  
Every Day Low Price **\$3.39**

GIANT 22-OZ. BOTTLE <b>JOY</b> 49¢	<b>R-C COLA</b> 10-Oz. Non-Returnable Bottles 8 pac 79¢	<b>CHARCOAL BRIQUETS</b> Guaranteed 20-Lb. Bag \$1.19	<b>COLD BEER and WINE</b> at Supermarket Prices!
--	--	---	---

**WOW! Look At This!**  
U. S. GRADE A WHITE - SMALL SIZE  
**SHAMROCK FRESH EGGS 25¢ doz.**  
Packed 3 doz. in crtn.

**PEPSI-COLA . . . 10-Oz. No-Return Bottles 8 pac 99¢**

**MARATHON GAS PUMPS**

**REGULAR**

**33.9**  
Includes All Taxes

NOTE: Our Gas Prices  
INCLUDE ALL TAXES

**TOP QUALITY GAS!**

**PREMIUM**

**37.9**  
Includes All Taxes

**OPEN DAILY and SUNDAY, 7 a.m. to 10 p.m.**

**FATHER'S DAY**  
JUNE 20  
ONLY A WEEK AWAY...  
**SHOPPED YET...**

It's Easy To Shop at **DANCER'S** for Dad  
Air Conditioned for your Comfort at **DANCER'S**

**Big Selection of New TIES - BELTS - WALLET**

Campus - Van Heusen - Munsingwear  
**SHIRTS**  
All New long and short sleeve.

Our Stock Is Great in  
**LEVI'S - Slacks & Jeans**

**SWIM TRUNKS SHORTS**

Our sales clerks will be pleased to help you make a good selection for Dad.

**DANCER'S**  
Chelsea's Friendly Dept. Store

## Airline Traffic Down At Michigan Airports

Lansing—The number of airline passengers in and out of Michigan airports declined by 8.6 percent during the first quarter of 1971 compared to the same period last year.

The Michigan Commerce Department's Aeronautics Commission reports that 2,005,693 passengers arrived and departed from 22 Michigan airports served by airlines during the first three months of this year compared to 2,193,254 during the same three-month period in 1970.

Four airports—Phelps-Collins at Alpena, Ross Field at Benton Harbor, Kent County Airport at Grand Rapids, and Reynolds Airport at Jackson—had increases while the other 18 airports recorded losses.

The Aeronautics Commission said the decline in passenger arrivals and departures was due to economic conditions through the U.S. and to lack of adequate schedules at some Michigan airports.

## PUMP & PANTRY STAMP

**SPECIAL**

**WILSON'S**

**ICE MILK**

**1/2 gal. crtn. 39¢**

With 4 Pages Pantry Stamps

Open 6 a.m. to 11 p.m. 7 Days a Week

**GALLUP-SILKWORTH PUMP & PANTRY**

295 S. Main St., Chelsea

Phone 475-7051



Ads  
Taken  
Till 5 p.m.  
Tuesday

# IT'S EASY TO BUY-SELL-RENT- HIRE & FIND WITH

# WANT ADS

Just  
Call  
GR 5-3561

## WANT ADS

### The Chelsea Standard

**WANT AD RATES**  
PAID IN ADVANCE—All regular advertisements, 50 cents for 25 words or less, each insertion. Count each line as a word. For more than 25 words add 2 cents per word for each insertion. "Blind" ads or box number ads, 35¢ extra per insertion.  
**CHARGE RATES**—Same as cash in advance, with 15 cents bookkeeping charge if not paid before 5 p.m. Tuesday preceding publication. Pay in advance, send cash or stamps and save 15 cents.  
**DISPLAY WANT ADS**—Rate, \$1.10 per column inch, single column width only. Appear and 14-point light type only. No borders or boldface type.  
**CARDS OF THANKS or MEMORIALS**—Single paragraph style, \$1.00 per insertion for 50 words or less; 2 cents per word beyond 50 words. Minimum, 1 inch.  
**COPY DEADLINE**—5 p.m. Tuesday week of publication.

**FOR REAL DOLLAR SAVINGS**  
be sure and see us before you buy any new or used car; Palmer Motor Sales, Inc. Your Ford Dealer for over 50 years. 21tf

**CONCERNED PARENTS** vote June 14 for Bob Schafer and Jerry Straub, Chelsea School Board. -51

**LAWNS MOWED**—Call 475-7185. 2

## Hearthside Yarn Shop

5450 Conway Road

Yarns, needles, accessories

Free instructions in knitting and crocheting with follow-up assistance.

Orders taken for hand-made items.

Ph. 475-2014

DOMESTIC refrigerator-freezer, garbage disposer service. Call Bill, 426-8814. -x51

**CONCERNED PARENTS** vote June 14 for Bob Schafer and Jerry Straub, Chelsea School Board. -51

## USED CARS

- '70 Thunderbird
- '70 Mayerick
- '70 Mustang Fastback
- '69 LTD 2-dr. Hardtop, air
- '68 Torino GT
- '68 Thunderbird
- '68 Chev Impala 2-dr. hardtop
- '67 Pontiac 5-dr. hardtop
- '67 Fairlane 500 2-dr. hardtop
- '65 Ford 4-dr.
- '65 Ford 2-dr.
- '63 Ford Convertible

## TRUCKS

- '69 Chev 3/4 ton pick-up
- '69 Ford 3/4 ton pick-up
- '67 International 1/2 ton pick-up
- '67 Chevrolet 1/2 ton

## PALMER FORD

Open Mon., Wed., Thurs., THU 9:00  
Chelsea GR 5-3271

## Real Estate For Sale

NICE, 3-BEDROOM, full basement, 2 1/2 car attached garage on one acre. Old US-12.

BEAUTIFUL 10-ACRE parcel, bordering state land, on M-52.

4-BEDROOM, year-round home at Sugar Loaf Lake. Make an offer.

## Marshall Realty

440 Dexter Rd.  
Pinckney, Michigan  
878-8182

## WANT ADS

**BOARDING, trimming, training.** Town and Country Kennels, Jackson Rd. at Baker. NO 8-7200. 71tf

**FOR SALE**—Hide-A-Bed, \$65; men's reclining lounge chair, \$45; chest of drawers, \$20; set of doll bunk beds, \$3; brand new just received, colonial style, unfinished desk, \$40. All in excellent condition. Phone 475-7236. -51

**CONCERNED PARENTS** vote June 14 for Bob Schafer and Jerry Straub, Chelsea School Board. -51

## Gem Travel Trailers and Campers

PICK UP COVERS

4" ————— \$100.00

26" ————— \$179.00 and up

## Triangle Sales

Chelsea 475-4302

## CLOGGED SEWER

## Reynolds Sewer Service

We Clean Sewers Without Digging

Drainage Cleaned Electrically

FREE ESTIMATES

2-YEAR GUARANTEE

Phone Ann Arbor NO 2-5277

"Sewer Cleaning Is Our Business—  
Not a Side-Line"

38tf

## KNAPP SHOES

For Cushion Comfort

Robert Robbins

475-7282

48tf

## Public Nursery Auction!

Sunday, June 13

beginning at 2 p.m.

Evergreens, shrubs and trees, all kinds and sizes. Blue Spruce, Japanese Yews, Mountain Ash, Holly, Sunburst Locust, Red Maple, Rhododendrons, Red Barberry, flowering trees, etc.

All plants fresh dug and ready to go. Buy at your price—why pay more? Leave anytime. Inspection invited.

We guarantee 50-50 and will deliver.

Mason's Nursery

Phone 429-5034

8794 Macon Rd., Saline, Mich.

1/4 mile south of cemetery

x46tf

## CAR RENTAL

by the day, week-end, week or month. Full insurance coverage, low rates. Call Lyle Christwell at Palmer Motor Sales GR 5-3271. 25tf

**CONCERNED PARENTS** vote June 14 for Bob Schafer and Jerry Straub, Chelsea School Board. -51

## FORMAL WEAR

RENTAL SERVICE

Proms - Weddings - Special Events

6 different colors.

## Foster's Men's Wear

43tf

**WANTED TO BUY**—4-bedroom house, preferably near Beach school or high school. Call Jeanette Proctor, 475-7765, evenings. 2

**FOR SALE**—5 h.p. Brooks mini-bike, 1970 model, \$135. Call after 4 p.m., 475-2697. -x51

**CONCERNED PARENTS** vote June 14 for Bob Schafer and Jerry Straub, Chelsea School Board. -51

## WANT ADS

**ROBERT PATRICK** for home improvement, building and maintenance. Ph. 475-7460. 45tf

**HAMMOND ORGAN** teachers wanted to teach in their own homes. Call Grinnell Brothers, Ann Arbor, 662-5667. 34tf

**CALL FRANK** for all your carpet cleaning jobs, morning or week-end. Needs only 3 hours to dry. Only 10¢ per square foot. Phone now for free estimate, 761-4328. All work guaranteed. 38tf

**PIANO TUNING**, Chelsea and area. Facilities for reconditioning and rebuilding. Used piano sales; reconditioned grand and verticals. E. Eklund, 428-4429. -x50tf

**WOULD LIKE** to care for your child in my home, weekdays. Phone 475-7418. 51

**CONCERNED PARENTS** vote June 14 for Bob Schafer and Jerry Straub, Chelsea School Board. -51

## Contractor Servicing Chelsea, Dexter and Manchester Areas

Complete Home Remodeling

Inside and Outside

Specializing in extra living space,

recreation rooms, kitchens and

panelling. Installing all aluminum

products, 5" eavestroughs, custom-

made awnings, windows and doors,

aluminum siding in many selected

colors and styles.

Please Call

DALE COOK

Chelsea 475-8363

20tf

**CONCERNED PARENTS** vote June 14 for Bob Schafer and Jerry Straub, Chelsea School Board. -51

## ALLSTATE INSURANCE

AUTO - BOAT - COMMERCIAL

LIFE - HEALTH - HOME

Phone Evens. or Week-ends for

N. H. MILES, Agent

GR 5-8334

44

**FRESH STRAWBERRIES**, 15¢ pound, or 30¢ quart, with or without sugar. Direct from western Michigan. Place order by June 19. Phone 428-5031. Manchester Frozen Food Lockers. 52

**CONCERNED PARENTS** vote June 14 for Bob Schafer and Jerry Straub, Chelsea School Board. -51

## Very Special

A few minutes from town, an

eight year old, three bedroom

rancher, with a 42' by 25' walkout

basement. Located on a two acre

shady lot, with a small corral.

Rural neighborhood. \$24,000.

25tf

**CONCERNED PARENTS** vote June 14 for Bob Schafer and Jerry Straub, Chelsea School Board. -51

## Concrete Building

80' by 40' located in a commercial-

industrial area in Grass Lake.

Just off Michigan Ave. Partially

rented. Only \$16,500, with land

contract, terms available.

## Willis Real Estate

Grass Lake

(517) 522-8481

51

**FOR RENT**—Furnished upstairs

apartment. Pay own utilities.

Private entrance. Pay first and last

month's rent. Phone 475-4691. -51

## 2-CYCO FUEL

For All 2-Cycle Engines

WHITE GAS

Available at

Gateway

Sports Centre, Inc.

45tf

**MISCELLANEOUS SALE**—Hide-A-Bed, chairs, dishes, desks, clothing, etc. June 10-11, 17, 18. All day. 15 Chestnut Dr., Chelsea. -x62

**INSTANT MOVING**—Furniture, appliances, what-have-you, moved quickly and carefully. If it's too much for you to handle, call Ed Lefson at 878-6162. -x51

**CONCERNED PARENTS** vote June 14 for Bob Schafer and Jerry Straub, Chelsea School Board. -51

## ELECTROLUX VACUUM CLEANERS

SALES and SERVICE

JAMES COX

Ph. 428-2931 or 428-8221

Manchester



"Alvin ruined the car we got in the Standard Want Ads—when I ran into him!"

## WANT ADS

A good buy... give it a try. Blue

Lustre America's favorite car-

pet shampoo. Dancer's. 50

## Real Estate For Sale

BRAND NEW—3-bedroom brick

ranch. Perfect country view, 2

ceramic baths, 2 fireplaces, large

(unfinished) rec-room, 2-car attached

garage. \$48,500.

7 1/2 ACRES—All inside village

limits. Has 3-bedroom house,

garage, 745 feet of railroad front-

age. \$30,000. Terms.

BUILDING LOT—One mile east

on Old US-12. 135 feet of front-

age. 1 1/4 acres. \$4000.

10 ACRE LOTS—Several to choose

from. 2 1/4 miles out. From \$7,500

up.

## CLARENCE WOOD BROKER

Efficient PERSONAL Service

646 Flanders St.

Phone 475-2033

45tf

**MISCELLANEOUS SALE**—Children's and adult clothing, furniture, including davenport and tables, household and numerous other articles. Waterloo Rd., 1 1/2 miles east of Wexford Rd., Saturday, June 12, 10 a.m. to 4 p.m. -51

**FOR SALE**—Year round lake home, Blind Lake. 2 bedrooms, attached garage, fireplace. Available August. Mid 20's. Phone 475-7512. 51tf

**FOR SALE**—Purebred German shorthair pointer puppy. Priced for quick sale. 123 North St. 475-2090. -51

**CONCERNED PARENTS** vote June 14 for Bob Schafer and Jerry Straub, Chelsea School Board. -51

## Listings Wanted

Sold out of Chelsea properties.

Have buyers waiting.

NO RENTALS

R. D. Miller

REAL ESTATE

Real Estate Broker

475-7811

15775 Cavanaugh Lake Rd.

Chelsea, Mich. 44tf

## WORK SHOE HEADQUARTERS

Famous Red Wing Brand

\$12.95 to \$26.95

## Foster's Men's Wear

84tf

**CONCERNED PARENTS** vote June 14 for Bob Schafer and Jerry Straub, Chelsea School Board. -51

## We'll put "wings" on your car

You'll think your car has sprouted

wings, the way it responds after

filling up with our new PURE gas.

You'll like the way the pep, power

and performance steps up when

you fill up with PURE Gas and Oil.

Our batteries will ensure you quick

starts, too!

## PURE OIL PRODUCTS

## JIM'S PURE SERVICE

Tires - Batteries - Tune-Ups - Brake Service - Wheel Alignment

PHONE 475-2822

501 SOUTH MAIN

## WANT ADS

**EXPERIENCED CHILD CARE** in my home, any time. Ph. 426-4192. -x41tf

**PIANO TUNING** at savings! New man in area offering introductory rates to build clientele. 769-0130. 30tf

**CONCERNED PARENTS** vote June 14 for Bob Schafer and Jerry Straub, Chelsea School Board. -51

## QUALITY EVERGREENS

Spreading, Upright and Hicks

Yews, Pyramid and Globe Arbor

Vitae, Fritizers, Birch Clumps,

Mountain Ash, Norway and Crim-

son King Maples.

All State Inspected

Free Estimates

Faist's

Evergreen Nursery

11862 Trist Rd., Grass Lake

Phone (517) 622-4588

52

## Custom Kitchen Cabinets

and

Formica Tops

Made to Order

475-2857

32tf

**CONCERNED PARENTS** vote June 14 for Bob Schafer and Jerry Straub, Chelsea School Board. -51

## For Low Cost Floor Covering

We have small and large pieces,

ends of rolls, etc., of linoleum

and carpeting at close-out prices.

Many sizes and colors to select

from.

## MERKEL BROS.



## WANT ADS

SEE US for transit mixed concrete, Kump Bros. Gravel Co. Phone Chelsea 475-2880, 4820 Loveland Rd., Grass Lake, Mich. x401f

TRAVEL TRAILERS — 13-ft. and up; 10x55 ft. trailers. John R. Jones Trailer Sales, Gregory, Mich. Phone 498-2655. x48f

FOR SALE — 2.3 acres with private drive off Old US-12 West. \$6,500. Phone 475-8904. x44f

CAR & TRUCK LEASING. For details see Lyle Christwell at Palmer Motor Sales, GR 5-3271. x49f

FOR SALE — 8' hydroplane with steering controls. Completely fiberglassed, perfect condition. Phone 663-8228. x46f

## STANLEY'S TREE SERVICE

Trimming, removals, cabling, bracing, surgery, etc.

### FREE ESTIMATES

Phone 428-8967  
If no answer, ph. 428-8066

## Chuck's Appliance Repair Service

Phone 426-4997

Most makes and models  
Appliances — Refrigeration  
Air Conditioners  
Residential — Commercial

## THE LITTLE FLOWER SHOP

3451 Waltrous Rd., Chelsea  
Phone GR 5-8508

Flowers, corsages, arrangements and plants.

### Weddings and funerals.

FOR SALE — Decca electric guitar, used one month. Also, size 9E football shoes, only used once. Phone 663-8228. x46f

### WANTED

### TYPIST

Accurate, 55-60 wpm.  
Apply in Person

## Chelsea Standard

300 N. Main St. Ph. GR 5-3581

FOR SALE OR TRADE — Mar, and Palomino gelding in good shape, for snowmobile, riding lawn mower, or motorcycle. Phone Muntz (517) 596-2580. x52

HELP WANTED — Female, 7 a.m. to 4 p.m. Phone 475-2756 or 475-3684 after 5 p.m. x52

## WANT ADS

PART-TIME, early morning delivery of the Detroit Free Press, Dexter — Pinckney area. Reliable car needed. Phone 483-2351 or 668-6911. x51

BABY-SITTING done in my home during summer vacation. Phone 475-2262. x51

## Semi-Drivers Needed Now

No experience necessary. Major trucking companies need trained, certified semi-drivers, local and over the road. Earnings are over \$5.00 per hour. Fringe benefits. Short, easy training program. Ages 18 to 45. Applications now being accepted. Call Area Code 513-223-3874, or write Express, Inc. Safety Department, P.O. Box 1401, North Ridge Branch, Dayton, Ohio 45414. x52

FOR SALE — House overlooking lake, 1 1/2 acres, 3 bedrooms, near Gregory. \$35,000. Phone (313) 878-3919. x52

FAMILY FUN, North Lake Mini-Putt. Open seven days a week, 4 to 10 p.m., starting June 11. Corner Stoffer and Territorial Rd. x51

FOR SALE — New Idea 35-ft. hay and grain elevator. John Deere 10-10 tractor, 3-pl. field, disc, plow, rotary cutter, metal water tank. Phone 475-7151. x52

GUITAR INSTRUCTION. Classical, folk, pop. Emphasis on theory. Only \$5.50 for 1/2 hour. Phone 475-1129. x47f

WANTED TO RENT — 2- or 3-bedroom house preferably in the Crooked Lake or Cavanaugh Lake area. Call collect (616) 457-8873. x52

## HOUSE FOR SALE

Living quarters upstairs — kitchen, 3 large rooms, bath, hall closet, walk-in attic off kitchen, refrigerator, stove, private entrance. Ground floor — 6 rooms. Bath, large glassed-in front porch, refrigerator, stove, carpeting, basement, 3-car garage, garden space, large back yard, 1 1/2 lots. Can rent both upstairs and down. Shown by appointment only. Location, 146 Park St. Call 475-8502 or 475-2039. x49f

## ADMIRAL SALE

Through the month of June

10% OFF

on all

Admiral Televisions

Due to my low overhead expenses, I will pass the savings on to my customers. Compare Quality and Prices before you buy. I will not be undersold.

Service on all makes TV and Stereo.  
Also: Antenna sales and installation.

## PORTER'S TV

212 Buchanan St., Chelsea  
Phone 475-8380

## WANT ADS

PIANOS TUNED — Players and rec'd organs rebuilt. D. Harvey, 1201 Shady Lane, Tecumseh. 423-8045 after 4 p.m. x51

FOR SALE — 10' by 18' tent, excellent condition. \$75. Call 475-8126 after 4 p.m. x51

TRENCHING — Water, electrical lines, footings, etc. 4" to 14" wide, 0-8' deep. Call evenings 476-7611. x52

SHINGLE ROOFING, all types, barns, and houses. Arnie Rae, 682-1758. x52

A - B - C CAMPER RENTAL. Fold-down or Travel trailers. \$37.50 per wk. and up. Reserve now. 426-4056 or 663-5447. x5

G. L. WELCH DECORATING CO. — Licensed and insured. Interior and exterior. Commercial and residential painting. Work guaranteed. 498-2847 Gregory, Mich. x56

BABYSITTING by elderly woman in her own country home, days. Phone 475-8033 anytime. x51

## CHELSEA School District

Eight Beautiful Country Sites in Noah Heights

Adjacent to Half Moon Lake State Park

Model Open 2-6 Sat. and Sun.

Any time by appointment

## Featuring

—Carpeting throughout

—2-car garage

—Full basement

—Hotpoint stove and refrigerator

—All aluminum exterior

—Concrete porches, sidewalk, gravel drive

—Storms and screens

COME OUT AND TALK TO US ABOUT OUR WIDE VARIETY OF HOME PLANS.

We know you will be pleased.

## W. C. Weber

Construction Co., Inc.

12290 Jackson Rd., Chelsea, Mich. 475-2828 663-1935 475-4977

475-2828 663-1935 475-4977

CHELSEA'S PREMIER BUILDER

LARGE GARAGE SALE — Hundreds of items priced for quick sale. Assorted clothing, dishes, toys, knick-knacks of all kinds. June 10 thru 14, 764 Kuehnle, Ann Arbor between Dexter Ave. and Sequoia Parkway. x51

MISCELLANEOUS SALE — Children's and adult's clothing, furniture, including davenport and tables, household and numerous other articles. Waterloo Rd., 1 1/2 miles west of Island Lake Rd., Saturday, June 12, 10 a.m. to 4 p.m. x51

WOULD LIKE to rent or purchase mobile home parking site. Phone 479-6811. x51

FOR SALE — 2 good quarter horses, used to children. 769-2690 after 6 p.m. x49f

## REAL ESTATE

NEW LISTING — Waterfront, year-around home at Cordley Lake.

3-BEDROOM home, 2 oild, garage, easement to Portage Lake, Dexter schools. Land contract.

NEW 3-BEDROOM, many extra features, stove, ref., Portage Lake, Pinckney schools.

ON HURON RIVER, near Hamburg, unfurnished. Owners moving out of state.

VACANT ACREAGE, 2, 5, 10, and 100 acre parcels.

MOBILE HOME SITES for sale.

## Howell Town & Country, Inc.

Phone Carlie Wiedman 426-3758

FOR SALE — 69 7-28 Camero for the young at heart. Sharp! Excellent condition throughout. \$2,200 or best offer. Call 426-4831 after 5:30 p.m. x51

## WANT ADS

FOR SALE — Refrigerator, with top freezer. 2 years old. Gas range, less than 1 year old. Gas clothes dryer. Call 475-3934. x51

GARAGE SALE — Third annual Parents of Cub Scouts Garage Sale, June 11-12 at 816 McKinley, Lawn mowers, TV, irons, toys, furniture. x51

FOR SALE — \$16,900 finished home on your lot anywhere in Michigan. Art Daniels, Dexter, 426-4311. Garden City, 421-7880. x51

4-ROOM furnished upstairs apartment in the country. One child accepted. Phone 426-8768. x52

PAT — Meet you at 8:00 p.m. on Friday at the North Lake Mini-Putt. Bill. x51

WANTED TO RENT — Large house or medium house with storage in the country. Dexter-Ann Arbor area. Phone 426-4844 anytime. x51

FOR RENT — 5-room apartment. Call GRASS LAKE, (617) 522-4849. x52

BABY DUCKLINGS for sale, year old heavy and light type laying hens, 12- and 14-week-old light and heavy pullets. Phone 475-4061 after 5:30 p.m. x51

FOR SALE By Owner — Water-front part insulated log cottage at 13800 Edgewater Dr., Half Moon Lake. Call GR 5-5181 or GR 5-4370 for appointment to see. x51f

FOR RENT — Sugar Loaf Lake unfurnished year-round, 3-bedroom lake-front cottage. Walk-out basement. \$150 per month. Phone 479-7034. x51

FOR SALE — 1970 Chevrolet Impala 4-dr. hardtop. Excellent condition. Loaded with extras, including radio, heater, tinted glass, rear window defroster, tilt steering wheel, power brakes, power steering, power windows, Turbo Hydramatic, etc. Will consider trade. Call Chelsea 479-6468. x51

FOR SALE — 1961 Corvair Monza. First \$50 takes. Call Chelsea 479-6468. x51

ATTENTION — Do you have something that is big or heavy or have a lot of? Have a 7-ton truck capable of hauling heavy or big loads anywhere you wish. For more information contact Stan Czaplak, Chelsea 479-6468. x52

CUSTOM MOSQUITO SPRAYING — Call Don Proctor, 475-8268. x52

WOULD LIKE to rent house or cottage in Chelsea-Dexter area. Ph. 479-6811. x51

GRAYLING-KALKASKA AREA — 5 acres wooded with creek — good trout fishing, good trail road, borders State Land, \$2995.00 [with \$600 dn., \$35 mo. 10 acres nice woods, good deer hunting, \$2995.00, \$600.00 dn., \$35 mo. Call or write Wildwood Land Co., Rte. N, Kalkaska, Mich. 49646. Ph. (616) 258-4897. x51

WILL BUILD FENCE by rod, or repair. Phone 426-4719 after 5 p.m. x51

WANTED TO BUY — Used child's rocking horse or "wonder-horse." Call 475-8024. x51

BARN SALE — Antiques, Danish modern chairs and pictures, men's and women's bikes with baby seat, family clothing, custom drapes, household items, table saw, rabbit cages, etc. Also Tennessee Walker horse. Thursday through Saturday, June 10, 11, 12. Phone 475-4792. x51

HIGH SCHOOL GIRL needed to work afternoons, six days a week, now and during school year. Apply Chelsea Cleaners, 113 Park St. x51

WANTED TO BUY — Outboard motor, 1 1/2 to 5 h.p. or electric trolling motor. Phone 475-8439. x51

THANK YOU — I wish to express my deepest gratitude to relatives, friends, and neighbors for cards, visits, gifts, and telephone calls I received while at the hospital and since my return home. Also, the Rev. John R. Morris for the visits and prayers. It is all appreciated very much. Thank you kindly. Waldo Horning.

THANK YOU — I wish to extend a special thank you to the Chelsea High school class of 1938 for the flowers and assistance which they sent at the time of my husband's death. Mrs. Eugene Martin.

Through its Correctional Services Program, the Salvation Army counsels the imprisoned. It helps them plan for parole, and when released, helps them find positions and lodging, often at Army installations. The Army's Correctional Services also provide spiritual aid both in and out of prison.

Michigan, a leader in health programs, is one of the few states to have a cancer research center — the new G. D. Cummings Cancer or best offer. Call 426-4831 after 5:30 p.m. x51

## Recognition of Red China To Be Debated on TV Program

East Lansing — Lansing's school mileage — yes or no? Assignment 10 presents a live election eve "Dial-log" with a panel of experts to discuss the issue and answer questions phoned in by viewers at 10 p.m. Sunday, June 13, on WMSB (Channel 10), Michigan State University television.

With moderator Chuck Drake and correspondent Craig Halberston, a panel of seven experts on the Lansing school system, its current structure and its projected needs will discuss the ramifications of victory or defeat of the millage proposal. Viewers will also be able to question studio panelists by calling 355-7440 during the hour-long broadcast.

Other WMSB highlights include: The Advocates, in a special 90-minute program, debate recognition of Red China at 7 p.m. Friday, June 18.

The specific question to be examined by Advocates Howard Miller and William Rusher is "Should the U.S. accept Peking as the one government of China for all purposes?"

Opponents of the proposal will include Nationalist Chinese Prime Minister C.K. Yen, who will appear in an interview filmed in Taiwan with Rusher. Miller will argue in favor of recognizing Communist China.

FRENCH REVOLUTION — The French Revolution is seen through the eyes of revolutionary figure Georges Jacques Danton as NET Playhouse Biography presents a dramatization of Danton's final hours at 11 p.m. Sunday, June 13.

Danton, a lawyer by profession, was elected to the national convention in 1772 and supported the execution of King Louis XVI the following year. He then became the president of the Jacobin Club, an organization dedicated to the furthering of national unity and the creation of a stable republican form of government. With the ascendance of Robespierre and the leaders of the Reign of Terror, the Jacobins lost favor, and Danton was guillotined.

BALLET — England's Royal Ballet dances Sir Frederick Ashton's acclaimed ballet derived from Shakespeare's "Midsummer Night's Dream" with music by Felix Mendelssohn on Fanfare at 3 p.m. Sunday, June 13.

For egg drop soup, combine 2 cans condensed beef broth, 2 soup cans water, and 1 small bay leaf. Bring to a boil. Beat 1 egg slightly, pour slowly in a thin stream into soup, stirring constantly. Remove bay leaf. Serves 4 to 6.

Want something a little different? Try Fire House Apple Punch. Heat together 2 quarts apple juice, 1/2 cup orange juice, 1-3 cup cinnamon red hot candies, and 1/2 teaspoon ground cloves. Garnish with apple slices. Serves 10 to 12.

Here's a dessert sure to please. Brush slices of angel food cake with butter. Place under broiler, brown lightly on both sides, about 1 minute. Spread 1 side with strawberry jam; top with dollop whipped topping.

A lazy Susan laden with cocktail appetizers adds color and interest to a party buffet. Cover trays with a bed of fresh parsley, two tins of Norway sardines, wedges of cheddar cheese, ripe olives, salami, and baby zherkins. Lemon sections for flavoring the sardines and crisp crackers dominate the center of the eye-catching arrangement.

For many of the nation's elderly, especially those with low incomes and few friends, the Salvation Army offers friendly counseling on financial, spiritual, health, housing and related problems. It also offers group activities... and a chance to stay young.

Scrubable wallpaper can add refreshing touches in kitchen or bath — as wall-matched window shades. Vinyl wall covering is flexible enough to use by itself for a shade, or can be attached to existing shade or cloth with special adhesive.

For further information write or call the Soil Conservation Service, 6101 Jackson Rd., Ann Arbor, 48103. Telephone number 761-6721. 6721.

ANY TRIP YOU MAKE will be more pleasant, if the car you drive is financed the Bank Way — economically, conveniently and with local people!

ANY TRIP YOU MAKE will be more pleasant, if the car you drive is financed the Bank Way — economically, conveniently and with local people!

ANY TRIP YOU MAKE will be more pleasant, if the car you drive is financed the Bank Way — economically, conveniently and with local people!

ANY TRIP YOU MAKE will be more pleasant, if the car you drive is financed the Bank Way — economically, conveniently and with local people!

ANY TRIP YOU MAKE will be more pleasant, if the car you drive is financed the Bank Way — economically, conveniently and with local people!

ANY TRIP YOU MAKE will be more pleasant, if the car you drive is financed the Bank Way — economically, conveniently and with local people!

ANY TRIP YOU MAKE will be more pleasant, if the car you drive is financed the Bank Way — economically, conveniently and with local people!

ANY TRIP YOU MAKE will be more pleasant, if the car you drive is financed the Bank Way — economically, conveniently and with local people!

ANY TRIP YOU MAKE will be more pleasant, if the car you drive is financed the Bank Way — economically, conveniently and with local people!

ANY TRIP YOU MAKE will be more pleasant, if the car you drive is financed the Bank Way — economically, conveniently and with local people!

ANY TRIP YOU MAKE will be more pleasant, if the car you drive is financed the Bank Way — economically, conveniently and with local people!

ANY TRIP YOU MAKE will be more pleasant, if the car you drive is financed the Bank Way — economically, conveniently and with local people!

ANY TRIP YOU MAKE will be more pleasant, if the car you drive is financed the Bank Way — economically, conveniently and with local people!

ANY TRIP YOU MAKE will be more pleasant, if the car you drive is financed the Bank Way — economically, conveniently and with local people!

## Thought For Food

Perk up those broiled lamb chops. Combine 2 tablespoons French dressing with 2 teaspoons soy sauce. Pour over 2 chops; refrigerate at least 2 hours. Remove chops from marinade; drain. Broil as usual. Makes enough marinade for 2 chops.

Cook one pound fresh green beans until just tender; drain well. In small saucepan cook 2 tablespoons each chopped onion and green pepper in 2 tablespoons butter until tender. Add onion mixture to beans. Season with 1/4 teaspoon marjoram, dash of basil, and 1/2 teaspoon salt. Cover; cook 3 to 5 minutes. Makes 4 servings.

Softened 1/2 pint vanilla ice cream in refrigerator for about 1 hour. Stir in 1/2 teaspoon brandy or sherry flavoring. Spoon on rhubarb wedges; dust lightly with cinnamon or nutmeg. Makes 1 cup sauce.

BATTING CHAMPS — A Tiger has won the American League batting title 22 times.

## SUNDAY'S SERMON

### ★ Forgiveness

Some of us rely too much upon God's sure forgiveness. When the decision is difficult, we make a wrong choice because it is the easier way. Our attitude seems to be "let me get out of this spot for now, and I'll make up for it tomorrow."

We are wrong to excuse our actions this way. We may be too hasty when we assume that God is looking the other way or that God is satisfied when we are moved by conscience to say that we are sorry.

We need, always, to meet the challenges of life, firmly and with determination. It is not always easy. It is possible only when we have faith, for faith offers the strength we need to right and to be right.

When we know that we have done our very best we can accept life's bad little moments and look for a better tomorrow.

## TODAY'S THOUGHT

By LOUIS BURGHARDT

Longfellow wrote, "In this world a man must either be a hammer or an anvil." His words exaggerate a point worth thinking about. When hammering is needed, the right kind of hammer should be used. For example —

You don't use a sledge hammer to drive in carpet tacks. Nor do you use a claw hammer when a pile driver is needed. You use the right weight hammer to mold sheet metal. It must be remembered a hammer can destroy things as easily as it can mold things. This is especially true in religion. It has been tried time and again, but one simply can not pound religion into anyone. A Carpenter who once lived in Nazareth hammered his truth. His hammer was meekness, gentleness, compassion and love. It was a light hammer but it carried tremendous impact.

In more recent years, Everett Dirksen hammered home a somewhat similar thought when he said, "I never knew a person who didn't become tractable if you didn't threaten him with a meat axe." BURGHARDT FUNERAL HOME, 214 East Middle St., Chelsea, Mich. Phone GR 5-4141.

## —SPECIALS—

GRADE A LARGE White Eggs . . . . doz. 41c

ECKRICH SMORGAS-PAC Lunch Meat 1-lb. pkg. 79c

CHASE & SANBORN Coffee . . . 3-lb. can \$2.32

40-OZ. PKG. JIFFY Biscuit Mix . . . . . 33c

FARMER PEET'S RE-PEETER Bacon . . . . 1-lb. pkg. 51c

Bulk and Package Garden Seeds

## KUSTERER'S

FOOD MARKET

DIAL 475-2721 WE DELIVER

## BANK AUTO LOANS ARE BEST!

ANY TRIP YOU MAKE will be more pleasant, if the car you drive is financed the Bank Way — economically, conveniently and with local people!

ANY TRIP YOU MAKE will be more pleasant, if the car you drive is financed the Bank Way — economically, conveniently and with local people!

ANY TRIP YOU MAKE will be more pleasant, if the car you drive is financed the Bank Way — economically, conveniently and with local people!

ANY TRIP YOU MAKE will be more pleasant, if the car you drive is financed the Bank Way — economically, conveniently and with local people!

ANY TRIP YOU MAKE will be more pleasant, if the car you drive is financed the Bank Way — economically, conveniently and with local people!

ANY TRIP YOU MAKE will be more pleasant, if the car you drive is financed the Bank Way — economically, conveniently and with local people!

ANY TRIP YOU MAKE will be more pleasant, if the car you drive is financed the Bank Way — economically, conveniently and with local people!

ANY TRIP YOU MAKE will be more pleasant, if the car you drive is financed the Bank Way — economically, conveniently and with local people!

ANY TRIP YOU MAKE will be more pleasant, if the car you drive is financed the Bank Way — economically, conveniently and with local people!

ANY TRIP YOU MAKE will be more pleasant, if the car you drive is financed the Bank Way — economically, conveniently and with local people!

ANY TRIP YOU MAKE will be more pleasant, if the car you drive is financed the Bank Way — economically, conveniently and with local people!

ANY TRIP YOU MAKE will be more pleasant, if the car you drive is financed the Bank Way — economically, conveniently and with local people!

ANY TRIP YOU MAKE will be more pleasant, if the car you drive is financed the Bank Way — economically, conveniently and with local people!



## Community Calendar

JUNE 1971
1 2 3 4 5
6 7 8 9 10 11 12
13 14 15 16 17 18 19
20 21 22 23 24 25 26
27 28 29 30

Chelsea Rebekah Lodge No. 130 regular business meeting at the IOOF and Rebekah Home Chapel, June 15, 8 p.m. All members urged to meet at the Rebekah Hall at 6:45. Tour of Home available.

Spaulding for Children Auxiliary, Monday June 14, 8 p.m. at the Farm. Last meeting until fall.

Cub Scout Pack 415 baseball game, Sunday, June 13, 2 p.m. Meet at Waterloo Methodist church, and bring a friend.

Regular business meeting VFW Auxiliary, Monday, June 14, 8 p.m. in the Rebekah Hall.

Wide Awake 4-H club, monthly meeting at C. Powers home, June 12, 1:30 p.m.

All Chelsea Community Fair chairman must attend June 22 meeting, 8 p.m. at the fairgrounds. All changes for 1971 premium list will be due. Any rules or changes not submitted that night will be printed same as last year.

Wolverine Farm Bureau Group Tuesday June 15 8:30 p.m. at the home of Albert Ruhlig. Note change in date.

Easter Chapter of Congregational church, picnic, at North Lake cottage of Mrs. Clarence Vogel, 8 p.m. Thursday, June 10. Rachel Chapter will be guests.

Chelsea Rebekah Lodge No. 130 Tuesday, June 15, meeting in Rebekah Odd Fellow Chapel in Jackson, 8 p.m. All members urged to meet at 6:45 p.m. at the Hall, on S. M-52.

Annual meeting Vermont Cemetery Association, Saturday, June 19, 2 p.m. at the home of Mr. and Mrs. Vernon Satterthwaite, 14675 Jerusalem Rd.

Chelsea Social Service, second floor of the Municipal Building, is open each Tuesday and Thursday, afternoon from 2 p.m. to 5 p.m. to assist persons with problems, either through counseling, or referral to other agencies, when indicated. Limited financial help may be given. The office also maintains a clothing depot for new and used clothing and bedding which is given without charge. All visitors welcome. Phone 476-4681.

Chelsea Camera Club pot-luck, Sylvan Township Hall, Tuesday, June 15, at 6:30 p.m. Bring a dish to pass and own table service. Meat and coffee furnished. Program: "Vacation in the Northwest" by Kathleen Chapman. Guests welcome.

Older Adult group of the Methodist church picnic, Saturday, June 19 at the Methodist Home. Pot-luck dinner, 12:30. Bring own table service and dish to pass.

St. Mary Rummage Sale, St. Mary School Hall, Friday and Saturday, June 18, 19. adv.52

St. Mary Bake Sale, Saturday, June 12, at Sylvan Town Hall, 10 a.m. to 1 p.m. adv.51

Monthly meeting of La Leche League an organization of mothers interested in breast feeding, Tuesday, June 15, 8 p.m., at home of Mrs. Diane Rinn, 2323 N. Steinbach Rd., Dexter. Mrs. Linda Siebert, 682-8761, will lead a discussion on the art of breast feeding, and overcoming difficulties. Nursing babies welcome.

TOPS Club at library, Wednesday afternoon group, 12:30 p.m. For information call 426-4549. Tuesday evening group, 8 p.m. For information call 476-8952.

American Legion and Auxiliary hospital equipment available by contacting Loren Keezer at 476-2766 or 476-3431.

Jerusalem Farm Bureau, June 10, 8:30 p.m. at the home of Mrs. Beutler. Bring cupcakes for refreshments.

South Dakota Club of Michigan, annual reunion picnic at Riverside Park Division of Plymouth Park, Plymouth, June 20, Gunsolly Mill Rd., Edward Haines Dr. All former residents are urged to attend. Phone 683-1710 or 476-4524 for further information.

Inquiries regarding the Chelsea blood bank may be directed to Harold Jones in the event that Mrs. Dudley Holmes is unavailable, or to Mrs. Pauline McKenna, American Red Cross in Ann Arbor, 971-5300.

Sewing every Tuesday afternoon at Korner House.

## DEATHS

**Mrs. Nils Saunden**  
Former Area Resident  
Dies Saturday in Florida

Lucille L. Saunden, 68, died June 6 in Hudson, Fla. She was born Dec. 19, 1902 at North Lake, the daughter of William and Julia Fawless Brown. She had been a Florida resident for the past 17 years, although she was formerly of Ann Arbor.

Survivors, in addition to her husband, Nils Saunden, are one son, George Guenther of Akron, O.; four grandchildren; two sisters, Mrs. Fred (Mary) Prinzling, of Plainfield, and Mrs. Charles (Nina) McDaniels, of Chelsea; three brothers, Cecil Brown, of Howell, Perry Brown, of Ann Arbor, and William Brown of Chelsea.

Funeral services were held Tuesday, June 8, at 2 p.m. at the Swarthout-Lamb Funeral Home, Pinckney, with the Rev. Henry Reinwald officiating. Interment was in Pinckney Cemetery.

**Frank Mitchell**

Had Retired 8 Years Ago  
From Ford Motor Co.

Frank Mitchell, 3491 S. Fletcher Rd., died Saturday morning at his home. He was 73 years old. Born March 29, 1898, in Kelvin, Ontario, Canada, he was the son of Charles H. and Caroline A. Bowman Mitchell. He came to this country at an early age, and lived in this area most of his life.

He married Hildegard Fontana Aug. 18, 1950, at St. John United Church of Christ, Rogers Corners. She survives.

Mr. Mitchell was a retired employee from the Ford Motor Co., having worked there 44½ years before his retirement eight years ago. He was a life member of the Manchester Lodge No. 148 F&AM, and a life member of the Meridian Chapter No. 48 R&AM of Manchester. He was a retired member of UAW Local 600 of Detroit.

Besides his widow, he is survived by a niece and several cousins. Masonic memorial services were conducted by the Manchester Lodge No. 148 F&AM Sunday evening. Funeral services were held Monday morning, June 7 at 11 a.m. from the Fontana Funeral Home, with the Rev. David Kleis of St. John United Church of Christ officiating. Interment followed in Vermont Cemetery, Chelsea.

## BIRTHS

A daughter, Jane Frances, to Mr. and Mrs. Thomas E. Ramey, 228 North St.

A daughter, Amber Elizabeth, June 4, to Mr. and Mrs. Donald C. Raney.

A daughter, Danielle Felice, June 5, to Mr. and Mrs. Daniel R. Delong.

A son, Jesse, to Mr. and Mrs. Steven A. Easudes, Dearborn Heights, May 18. Mrs. Easudes is the former Jean Marie Parker, of Chelsea. Maternal grandparents are Mr. and Mrs. Sylvester Parker, Chelsea. Paternal grandparents are Mr. and Mrs. Albert Easudes, 7547 Fenton St., Dearborn Heights. Paternal great-grandparents are Mr. and Mrs. Tony Easudes of Grass Lake.

## Board Election...

(Continued from page one)  
Among the various associations with which he has been affiliated are Citizens for Quality Education, Michigan Association of Conservation Ecologists, Michigan Academy of Arts and Science, American Fisheries Society, Wildlife Society, the Reserve Officer Association, and, until 1960, the Central Ann Arbor Kiwanis Club.



Protect your boat... get **Auto-Owners Boat Insurance**  
Inboards  
Inboard-outboards  
Outboards  
See your A-O Man

**A. D. MAYER AGENCY, INC.**  
"Your Protection Is Our Business"  
115 Park St., Chelsea  
PHONE 479-5061  
**Auto-Owners Insurance**  
Life - Casualty - Fire - Auto

## Generation Gap U.S.A.



"Tell me about the days when there used to be fish in the lake..."

## Band Students Win Variety of Special Honors

Local band students earned quite a number of honors this past week as several have been selected to participate in the Interlochen All-State Band, and the Michigan State Band and Orchestra Honors Band.

Chosen for the Interlochen All-State High School Band are Kathryn Schaffer, who plays French horn in the Chelsea Band, Karlene Kargel, clarinet, and Robert Wojcicki, cornet. Selected for the Intermediate Band were Pat Knickerbocker, flute, and Kathy Fairbanks, clarinet.

Kathryn Schaffer was awarded the Kiwanis Interlochen Award scholarship to attend the All-State camp.

Selected to perform with the Michigan State Band and Orchestra Honors Band were Jeff Parsons, trumpet, Karlene Kargel, clarinet, and Sue Rasmussen, flute. This organization performed May 22 at Interlochen as a part of the Youth Arts Festival celebration during Michigan Week.

Students performing in the above "honor" bands were chosen on the basis of their performance at the State Solo and Ensemble Festival, Chelsea band director Warren Mayer stated.

## Summer Band...

(Continued from page one)  
band will meet at 7:30 p.m. every Thursday evening.

Junior High bands, and the grade school handsters will meet in the Beach Middle school band room. High school and community band will meet in the high school band room.

Any Friday night summer concerts will be announced at a later date, Chelsea band directors stated.

## Olympic Runner From Chelsea?

(Continued from page one)

According to her coach, with Bonnie's progress within the past few weeks so marked, they are hoping that she will be able to train hard this coming year in hopes of qualifying for the Olympic trials to be held next spring. He added that now is the time to start the work towards the sports world's classic event, as top athletes must often train very hard and long to be really good.

Financing for Bonnie's transportation to all the big meets, he commented, is another problem. "Chelsea has never had an athlete ever that came close to participating in the Olympics," he said, and thought that it would be a shame to have to forego the opportunity for a deserving athlete for economic reasons.

He claimed that he was working on ways to raise the necessary funds, though, as he has a great deal of faith in Bonnie Wengren.

## Littering Can Be Expensive Pastime

Littering is getting to be a pretty serious social offense these days. Robert J. Piercy, 40, of Tipton, was ticketed on that charge May 28, as he was riding in the car of Carthus Armstrong. Armstrong was arrested by Chelsea Patrolman Browning on a charge of driving under the influence of alcohol. Piercy had been tossing beer cans out the window during Browning's pursuit of the vehicle, and was subsequently ticketed.

(Appearing in Court Monday, June 7, Piercy pled guilty to the charge, and was fined \$100 fine and costs.

Telephone Your Club News To GR 5-3581

## School Board Briefs

At the Board of Education meeting held Monday evening, June 7, present were President Irwin, and members Smith, Storey, Powers, Haselschwardt, and Hopkins. Superintendent Cameron, Business Manager Mills, and Principal Benedict.

Guests included Gerald Straub and Robert Schaefer.

Meeting was called to order by President Irwin at 8 p.m.

Motion by Koenn, supported by Haselschwardt, to accept the minutes of the May 17 meeting. All ayes.

Motion by Powers, supported by Smith, to pay general fund bills of \$6,634.35. All ayes.

Motion by Storey, supported by Haselschwardt, to adopt the agenda as amended. All ayes.

Motion by Powers, supported by Koenn, to accept the resignation of Mrs. Mary Sapala effective June 11. All ayes.

Motion by Storey, supported by Haselschwardt, to accept the resignation of Mrs. Barbara Brown effective June 30. All ayes.

Motion by Haselschwardt, supported by Smith, to accept the resignation of Douglas Davidson effective June 14. Ayes: Smith, Haselschwardt, Storey, Irwin, Nays: Koenn, Powers.

Motion by Haselschwardt, supported by Storey to renew the contract with Michigan Classroom Television for the 1971-72 school year. All ayes.

Motion by Powers, supported by Smith, that the president, secretary and chief negotiator for the Board of Education sign the amendments to the Master Agreement with the CEA for 1971-72. All ayes.

An extended discussion was held regarding the hiring of an assistant principal and the description of the duties of the assistant principal.

Motion by Powers, supported by Hopkins to amend the directive of May 17 to the superintendent to read as follows: "A new assistant principal is to be hired and the candidate is to have a clause in his contract stating that if Bryce Fauble is the newly-hired assistant principal will be assigned to a classroom position." The contract is to be written by the school attorney. All ayes.

The 1971 graduation exercises were discussed.

A June 30 hearing relative to the proposed Mill Creek Metropolitan Park was discussed. The school district will prepare materials for presentation at that time.

The problem of drug use and abuse was discussed.

The future of the summer agriculture program was discussed in light of the resignation of the agriculture teacher. Mr. Lane is presently making efforts to hire a replacement.

## Firemen Called For Grass Fires, Burning Truck

Chelsea firefighters were called out Friday, June 4, shortly after noon to land owned by the county along Old US-12, just east of Pierce Rd. The grass fire caused no damage and was quickly extinguished.

Friday afternoon, at 5:10 p.m. a call to assist at a massive grass fire along the Penn Central tracks on Garvey Rd. was received. Firemen from Ann Arbor, and Dexter were also called to assist in that fire, which Fire Chief Jim Gaken claimed "burned also from one end of our territory to the other."

An accident on I-94 near the M-52 overpass involving two semi-trucks sent firemen scurrying to the scene. One of the vehicles had slid on the wet pavement, hitting the other, and breaking open its fuel tank. Washtenaw County Sheriff's Department called firemen to the scene to wash the fuel off the road as it was quite slippery in the falling rain.

The Washtenaw County Road Commission had to be summoned to spread sand over the area before the road could be used for heavy traffic once again. Chief Gaken reported that there was some damage caused to the trucks in the incident, although there were no injuries.

**ADDRESS CORRECTION**  
An error was made in last week's story concerning Anita Wenk Himes. Mr. and Mrs. Himes are residing at 511 Tyler Circle, Apt. 98, Woodbridge, Va., 22191, instead of "Apt. 8".

## GAMBLES

### GREAT JUNE SALE

SAVE \$31<sup>07</sup>



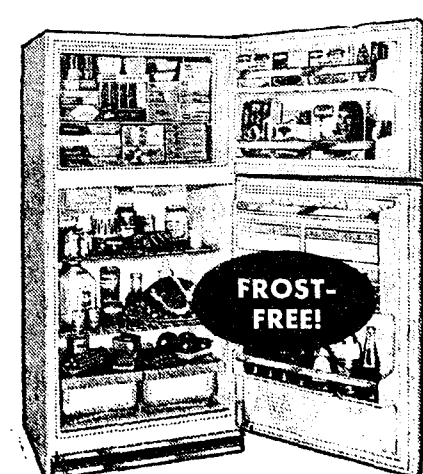
Giant Size  
STORES  
651 LBS.

**CORONADO CHEST FREEZER**

Reg. \$229.95 **\$198.88** Use Your Credit

- Stock seasonal foods, market specials
- Thinwall construction, defrost drain
- Two dividers, storage basket, lid light

SAVE \$50



**CORONADO 17.4 CU. FT. REFRIGERATOR-FREEZER**

Reg. \$319.95 **\$269.95** Use Your Credit

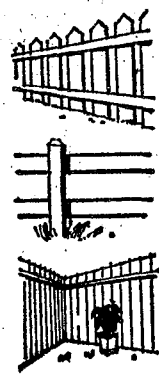
- Freezer holds 181 lbs.; 12.2 cu. ft. refrigerator with slide-out shelves
- White, copper-tone, avocado; just 30" W.

AT **GAMBLES**

IT'S EASY TO...



## Build a Fence



There's a high or low wood fence to fit your style of home - to add value, appearance and protection to your property. Plan it as a screen for outdoor living - as a background for shrubs and flowers - as a safeguard for children, pets and property. Build it, easily, with Weyerhaeuser Engineered 4-Square Kiln-Dried lumber and plans. Let us show you how easy it is to build a strong, attractive fence.

**1" x 6" BOARDS**  
REDWOOD ..... 13c ft.  
SPRUCE ..... 9½c ft

**POSTS, 4" x 4" REDWOOD**  
6 ft. .... \$2.15  
8 ft. .... \$2.80  
10 ft. .... \$3.50

**POSTS, ROUND CEDAR**  
3" x 7' ..... \$.85  
3" x 8' ..... \$1.00  
4" x 7' ..... \$1.15

**CHELSEA LUMBER CO.**

"Where the Home Begins"

## JUNE DISCOUNTS

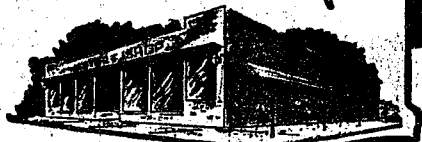
GOOD SELECTION  
**MEN'S TRAVEL KITS... from \$1 to \$5.60**  
CAMERA OUTFIT  
**KODAK INSTAMATIC X-15...** Reg. \$22.95 **\$17.95**  
PHILLIPSHAVE TRIPLE HEAD  
**ELECTRIC SHAVER...** \$19.95  
SHEAFFER  
**PEN & PENCIL SETS...** Reg. \$3.95 **\$3.25**  
3 MODELS TO CHOOSE FROM  
**Schick Retractable Shavers Drastically Reduced**  
GAME SET  
**LAWN TIC-TAC-TOE...** \$9.98  
GAME SET  
**POSY PITCH...** \$4.88  
8 TRANSISTOR SOLID STATE  
**AM RADIO...** Reg. \$3.97 **\$3.50**  
**BUDGET-WISE STORE**  
Chelsea's First Discount Store  
116 South Main Street Phone GR 9-1611



The Supermarket That's Just a Little Bit Better

# Stop & Shop

14901 Old U.S.-12  
Corner at M-52  
Chelsea

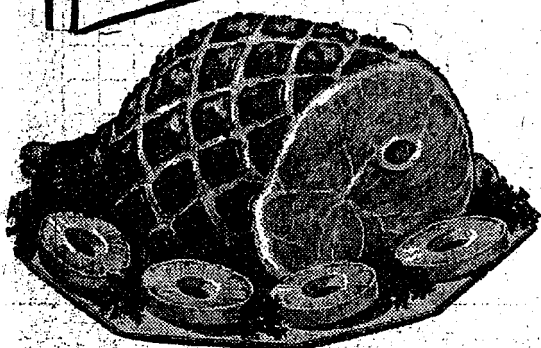


Prices effective Thursday, June 10, 1971  
through Wednesday, June 16, 1971.

U. S. Govt. Inspected Fully Cooked  
Sugar Cured! Hickory Smoked

## HAM

Shank Portion **39<sup>c</sup> lb.**



U.S.D.A. Choice Top Quality! "Trimmed-Rite" Beef

**Chuck Steak** Blade Cut **69<sup>c</sup> lb.**

U.S.D.A. Choice Top Quality! "Trimmed-Rite" Beef

**Chuck Steak** Round Bone Cuts **89<sup>c</sup> lb.**

Top Quality Cut-Rite Lean! Fresh! Meaty!

**Pork Steaks** Quick To Fix **49<sup>c</sup> lb.**

Hickory-Smoked! Sugar Cured! Fully Cooked

**Ham** Butt Portions **49<sup>c</sup> lb.**

Hickory Smoked! Sugar Cured! Fully Cooked

**Hams** Whole **49<sup>c</sup> lb.**

U.S.D.A. Grade A Pan-Ready! Fresh Frying

**Chicken Legs** Backs Attached **49<sup>c</sup> lb.**

U.S.D.A. Grade A Pan-Ready! Fresh Frying

**Chicken Breasts** Backs Attached **49<sup>c</sup> lb.**

Top Quality Peschke's Sliced

**Bologna** 14-Oz. Pkg. **69<sup>c</sup>**

Hickory Smoked! Sugar Cured! Fully Cooked!

**Hams** Center Cut Slices **99<sup>c</sup> lb.**

Land O' Frost Wafer Sliced Assorted

**Luncheon Meats** 3-Oz. Pkg. **39<sup>c</sup>**

TOP QUALITY PESCHKE'S

## SKINLESS FRANKS...

14-Oz. Pkg. **69<sup>c</sup>**

McDONALD'S FRESH  
**COTTAGE CHEESE**

1-Lb. Ctn. **2 for 49<sup>c</sup>**

BANQUET FRESH FROZEN  
**CREAM PIES**

Chocolate - Lemon - Banana - Coconut  
14-Oz. Pkg. **19<sup>c</sup>**

MUSSELMAN  
**APPLESAUCE**

25-Oz. Jar **25<sup>c</sup>**

WHITE CLOUD  
**BATHROOM TISSUE**

White or Colors  
Roll Pack **19<sup>c</sup>**

ASSORTED FLAVORS  
**KOOL-AID**

4/5 Gr. Env. **5<sup>c</sup>**

MEADOWDALE  
**CORN**

Whole Kernel or Cream Style  
15 1/2-Oz. Can **16<sup>c</sup>**

FRANCO-AMERICAN  
**SPAGHETTI**

15 1/2-Oz. Can **12<sup>c</sup>**

TUXEDO  
**CHUM SALMON**

1-Lb. Can **69<sup>c</sup>**

**POP**

16-Oz. One-Way Bottle **10<sup>c</sup>**

TREESWEET FRESH FROZEN  
**ORANGE JUICE**

6-Oz. Can **19<sup>c</sup>**

McDONALD HOME DISPENSER  
**FRUIT DRINK**

10-Qt. Cont. **\$1.59**

McDONALD  
**POPSICLES**

Asstd. Flavors **12 for 44<sup>c</sup>**

MEADOWDALE  
**SWEET PEAS**

1-Lb. Can **16<sup>c</sup>**

MEADOWDALE  
**CUT GREEN BEANS**

15 1/2-Oz. Can **16<sup>c</sup>**

AMERICAN BEAUTY  
**PORK & BEANS**

110-Oz. Can **79<sup>c</sup>**

Read's German or Mayonnaise  
**POTATO SALAD**

40-Oz. Ctn. **65<sup>c</sup>**

**Health & Beauty Aids**

CLOSE UP  
**TOOTHPASTE**

Med. Size 3-Oz. Tube **49<sup>c</sup>**

LUSTRE CREME EXTRA HOLD  
**HAIR SPRAY**

12-Oz. Can **59<sup>c</sup>**

BRYLCREEM  
**HAIR DRESSING**

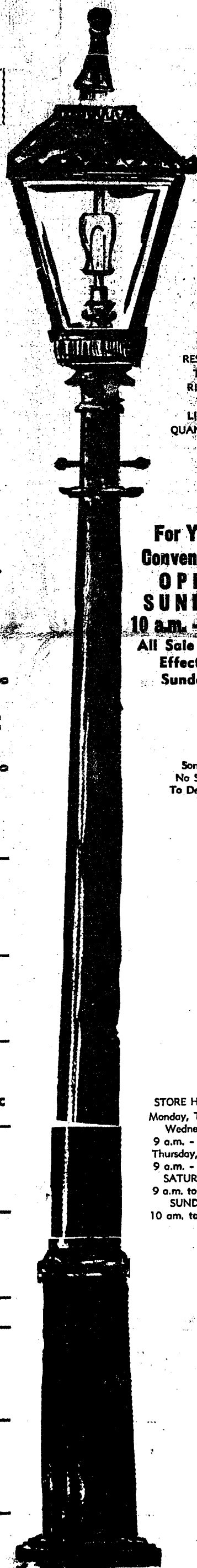
Large Size 3-Oz. Tube **89<sup>c</sup>**

### Farm Fresh Produce

California Long White  
**POTATOES** 8-Lb. Bag **79<sup>c</sup>**

**WATERMELONS** 20-Lb. Average **\$1.29**

Fresh Carolina  
**PEACHES** **39<sup>c</sup> lb.**



WE  
RESERVE  
THE  
RIGHT  
TO  
LIMIT  
QUANTITIES

For Your  
Convenience  
**OPEN  
SUNDAY**  
10 a.m. - 4 p.m.  
All Sale Prices  
Effective  
Sundays

Sorry,  
No Sales  
To Dealers

STORE HOURS:  
Monday, Tuesday,  
Wednesday  
9 a.m. - 6 p.m.  
Thursday, Friday  
9 a.m. - 9 p.m.  
SATURDAY  
9 a.m. to 6 p.m.  
SUNDAY  
10 a.m. to 4 p.m.

Second  
Section

## The Chelsea Standard

Pages 7-14

CHELSEA, MICHIGAN, THURSDAY, JUNE 10, 1971



TRYING ON NEW UNIFORMS which the teen volunteers at the Chelsea Methodist Home this summer will be wearing are Peggy Kraai, left, and Stephanie Aldrich, two of the young people who will be assisting in the program. Orientation for prospective Home volunteers is to be June 10, today, at 2 p.m., and 4 p.m. Mrs. Lynn Blecha will instruct the youthful recruits in the M-1 lounge. All who are interested in serving on the program this summer are urged to attend.

### Young Woman Killed in Car Cycle Crash

A young woman from Plymouth was killed Friday, June 4, when she was run over by a car after being thrown from a motorcycle on North Territorial Rd. at the Mast Rd. intersection in Webster township, according to sheriff's deputies.

Sharon Chaps, 25, was a passenger on the back of a motorcycle driven by Michael D. Clark, 21, of Westland. Clark told deputies he was going east on North Territorial when a car driven north on Mast by James R. Nichols, 26, of Ann Arbor, went through a stop sign.

Clark told deputies he applied his brakes and the motorcycle skidded about 40 feet and tipped over. The Nichols car struck the motorcycle. Miss Chaps was thrown to the roadway and the car ran over her, deputies said. The accident occurred at 4 p.m.

Clark was treated for injuries at University Hospital and Nichols was released pending further investigation by police.

Miss Chaps was the 20th traffic fatality for the county.

### Jaycees Seeking Items for Annual Rummage Sale

Chelsea Jaycees remind local citizens that their annual Rummage Sale is once again coming up, and they ask residents to help by contributing rummage. Residents are urged to keep an eye peeled for useful but no longer needed items as they clean out their garages, attics, closets, and basements, with the advent of warm weather.

This year's sale will be held June 26 at the Chelsea Fairgrounds.

Pick-up may be arranged by calling Jaycees Glenn Weir, 475-7509; Dan Eder, 475-2663; or Mitchell Zink, 475-7912. Deadline for pick-up is June 24.

Jaycees remind that a rummage sale is a good solution to the problem of what to do with those articles that are no longer needed, but which may be useful to others. They hope all local citizens will assist them in their annual project to raise funds for their community projects.

New peach products being developed include puree and clear peach concentrate, refrigerated peach slices, partially pasteurized peaches and instant peach flakes.

### Truck Driver Loses Leg in Mill Accident

A truck driver for a feed supply truck was badly injured Tuesday evening, June 1 at the Honnegger's Co. plant, 11800 Dexter-Chelsea Rd.

Robert Carreras, of Park Forest, Ill., a truck driver for Jack Gray Transportation Co., was delivering a load of corn, gluten, and meal to the mill when the accident occurred.

The employee who was assisting with the unloading of the truck left for a few minutes to bring a needed tool, and upon returning found that Carreras apparently had accidentally severed his left leg in the augers at the mill.

Chelsea Police and the Washtenaw County Sheriff's Department were called to the scene. Chelsea police officers Schneider and McDougall were first to arrive, and administered first aid to the victim until the Superior ambulance arrived to take him to the University of Michigan Hospital.

Officials at the local Honnegger plant declined to comment on the accident.

(Political Advertisement)

## Vote To Improve the School System

THESE CANDIDATES



**BOB SCHAFER**  
1-Year Term

**JERRY STRAUB**  
4-Year Term

for **BOARD OF EDUCATION**

STAND FOR

- ★ More meaningful communications between taxpayers, students, teachers, administrators, and the board.
- ★ Saleable skills for everyone — a sound vocational program plus continued high quality college preparation.
- ★ Conserving the tax base of the Chelsea School District.
- ★ Accountability to the taxpayers.

THEY HAVE

- ★ Sons and daughters at every level in the Chelsea schools.
- ★ Long been active in education activities.
- ★ Attended numerous board meetings.

## VOTE, MONDAY, JUNE 14

from 7 a.m. to 8 p.m. at Beach School

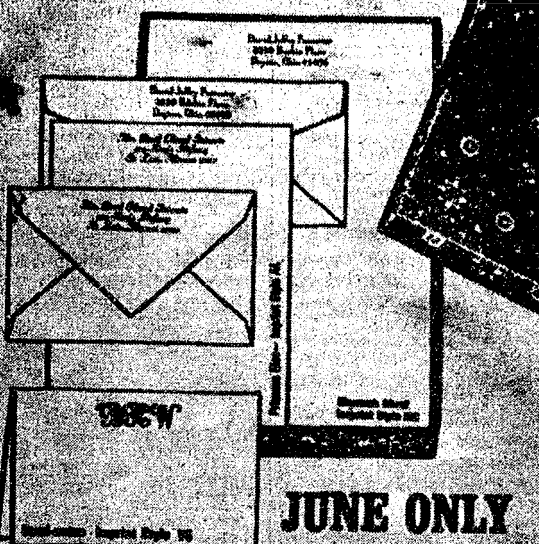
VOTE FOR CONTINUOUS EFFORTS TO IMPROVE OUR SCHOOLS







# 1/2 Price Sale



**JUNE ONLY**

**Rytec Personalized Stationery**  
Double the Usual Quantity  
**Hand Craft Vellum**  
PERSONALIZED LETTERSHEETS AND MEMO-  
NOTES  
only **495** (regularly \$9.90)

The superior paper, in sheets or sophisticated stationery, offers decided quality for a surprisingly modest sum. Smooth vellum paper in choice of white, pale blue or grey, with custom printing in either blue, dark grey or raspberry red ink. Gift boxed, of course. 150 princess sheets & 100 envelopes, or 100 monarch sheets & 100 envelopes, or 100 semi-notes & 100 envelopes.

## MAIL ORDER COUPON

THE CHELSEA STANDARD  
CHELSEA, MICHIGAN 48118

NAME CRAFT VELLUM: DOUBLE QUANTITY ORDER (of 495 a box)  
SPECIAL ORDER: (check) \$5 extra Plus shipping (add \$1.00 a box)  
Special Order of Rytec Stationery:  
Name \_\_\_\_\_  
Address \_\_\_\_\_  
City \_\_\_\_\_ State \_\_\_\_\_ Zip \_\_\_\_\_  
Send me: Princess Sheets: ☐ White (1500) ☐ Blue (1200) ☐ Grey (1000) ☐ White (41000) ☐ Blue (41200) ☐ Grey (41000)  
Monarch Sheets: ☐ White (1200) ☐ Blue (1200) ☐ Grey (1200) ☐ White (41200) ☐ Blue (41200) ☐ Grey (41200)  
Semi-Notes: ☐ White (1000) ☐ Blue (1000) ☐ Grey (1000) ☐ White (41000) ☐ Blue (41000) ☐ Grey (41000)  
Color Ink: ☐ Blue ☐ Grey ☐ Raspberry  
Envelopes: ☐ 100 Princess ☐ 100 Monarch ☐ 100 Semi-Notes  
Total \$ \_\_\_\_\_  
Name \_\_\_\_\_  
Address \_\_\_\_\_  
City \_\_\_\_\_ State \_\_\_\_\_ Zip \_\_\_\_\_  
Account No. \_\_\_\_\_  
☐ Charge ☐ Check or M.O. enclosed ☐ Bill me, C.O.D.

## Dwight Beach School HONOR ROLL

Continuously on Honor Roll for Entire School Year

6th GRADE—Lisa Allhouse, Michele Ball, Michael Bowen, Kimberly Brown (all A), Robert Burgess, Kathy Burns, Julia Chapman, Michael Check, Anthony Clark, Lorraine Clark, Karin Eisemann, Annette Gaken, Richard Haller, Barbara Hinderer (all A), Karen Keiser, Becky Kraai, Carol Linebaugh, Don Morrison, Sandra Norton, Rene Papo, Kyle Parker, Diana Fletcher, Renee Poisson, Laura Rademacher, Nancy Rossbach, Diana Roy, Brenda Salyer, Patricia Salyer, Judy Schiller, Delany Seitz, Linda Shaw, Karen Simon, Tina Sindlinger, Michael Stoner, Ellen Straub, Karen Trinkle, Lisa Walworth, Mark Warren, Diane Zeeb.

7th GRADE—Dora Alexander, Kurt Allhouse, Martha Blanchard, Michele Blanchard, Steven Bowen, Lois Butler, Yvonne Clark, Sandra Crouch, Mark Dalton, Kathy Fairbanks, Randy Guenther, Richard Gant, Elizabeth Haselschwardt, Nancy Heppburn, Annette Houle, Linda Jennings, Sara Johnson, Karen Kern, Teri Knickerbocker, Mike Kozminski, Teri Lutovsky, Paul Marshall, Matthew Merkel, Karen Ottoman, Theresa Ottoman, Deborah Packard, Michele Papo, Daniel Pfeifle, David Fletcher, William Rademacher, David Schaible, Renee Schneider, Mary Seyfried, Brenda Shadon, Pamela Siebert, Craig Sprague, Julie Tite (all A), Diane VanGorder, Robbie Wenk, Anne Williams.

8th GRADE—David Alber, Glenn Alter, Steven Bennett, Pamela Blackwell, Mary Beth Chandler, Jodi Daniels, Teresa Gilbreath, Cindy Harook, Robert Hercules, Mary Hoffmeyer, Janis Hopkins, Terri Jones, Ann Longworth, Laurie Lewis, Kim Longworth, Laurie Mann, Donald Messner, Randy Musbach, Michele Osborne, Mark Pennington, Chris Rabbitt, Debbie Rossbach, John Schaffer, Lori Schiller, Sharon Schiller, Sharon Schiller, Susan Shaw, Linda Simon, Brian Smith, Shawn Spaulding, Cheryl Stepp, Cindy Turcott, Paul Wood.

## BEACH MIDDLE SCHOOL PERFECT ATTENDANCE, 1970-71

6th GRADE—John Adams, Lisa Allhouse, Teresa Breza, Diane Burg, Howard Bush, Douglas Craft, Ricky Davis, Karin Eisemann, Jeffery Heard, Cheryl Koch, Kent Longworth, Scott McElaine, Trent Satterthwaite, Jeffery Schantz, Judy Schiller, Delany Seitz, Tina Sindlinger, James Stahl, John Toon, Harold Vandervoort.

7th GRADE—Kimble Bear, Linda Gaken, Pam Greenleaf, Randy Guenther, Kitty Gullett, Lou Ann Hankerd, Gerald Huehl, Kevin Kelly, James Marshall, Donald Osterle, Roger Policht, Sue Ann Schuelke, William Shoemaker, Yvonne Sindlinger, David Stoll, Julie Tite, Linda Wahr, Douglas Welshans.

8th GRADE—Julie Asmusen, Dennis Barker, Dale Heydauff, Terri Jones, Kim Longworth, Richard Lutovsky, Michelle Maistre, Shelly Porath, David Proctor, Robin Schneider, Duwana Villemure, Faye Weirich, Curt Winans.

## your week ahead

BY DR. A.W. DAMIS

Forecast Period: June 14 to June 21

**ARIES** Mar. 21 - Apr. 19 During this cosmic cycle, you'll discover: "A friend to everybody is a friend to nobody."  
**TAURUS** Apr. 20 - May 20 It's a lopsided situation! Solve one problem with the opposite sex; you'll add greater difficulties.  
**GEMINI** May 21 - June 20 Frieid in a jam? Then, look at the whole picture or prepare for a double intrigue.  
**MOONCHILD** June 21 - July 22 Many Moonchildren will have the advantage of a second chance, in affairs of the heart.  
**LEO** July 23 - Aug. 22 You should be meeting some rather strange people, to put it mildly. So, become scarce.  
**VIRGO** Aug. 23 - Sept. 22 There's problems with an associate. To mention one, they'll take credit for something you have done.  
**LIBRA** Sept. 23 - Oct. 22 One member of the opposite sex, bearing an air of mystery and intrigue - heading your way.  
**SCORPIO** Oct. 23 - Nov. 21 It's been a long time coming - suddenly it's here - additional responsibilities and reciprocating for a past favor.  
**SAGITTARIUS** Nov. 22 - Dec. 21 Steady, now! It's probable, you will make a decision that could involve sizeable monies, eventually.  
**CAPRICORN** Dec. 22 - Jan. 19 An associate's actions will hit the formula that pleases you. A solid friendship should develop.  
**AQUARIUS** Jan. 20 - Feb. 18 You are inclined to yield to the influence of a powerful personality. Hold your own!  
**PISCES** Feb. 19 - Mar. 20 Many under your sign will initiate plans to change their job, task, mission or locality.

## THE LANSING REPORT

FROM  
senator  
**GIL BURSLEY**



I have just introduced a new bill to provide state aid to schools for the 1971-72 year—a realistic measure designed to make the most effective and equitable distribution of forseeable revenue.

Traditionally, school-aid bills originate in the State House of Representatives. But as of this late date in the current session, no House action has been taken. And further delay will cause serious difficulties for school districts that must prepare their budgets and negotiate contracts with their teachers.

The estimated price-tag of my bill is \$1,032.6 million—\$5 million above the amount proposed in Governor Milliken's budget, but far below the estimated \$1,240 million requested by the State Department of Education. I would certainly like to do more for our schools this year, but I believe this is the largest proposal that can be called reasonable in light of the current fiscal crisis. I see little sentiment in the Legislature, for increasing taxes beyond the level needed to fund the Governor's budget.

Under my bill, the formula by which state aid is distributed would be increased on a flat-rate \$24 per pupil basis. This means that a school district showing no increase in the amount of property valuation behind each pupil would receive a \$24 hike in state aid.

However, most districts will show such an increase. In general, my plan will provide \$12 per pupil increases for "average" school districts—those in the \$15,000 to \$20,000 SEV per pupil range that are experiencing normal increases in both valuation and enrollment.

Poorer districts will receive larger increases; and wealthier districts, lesser increases. A few of the wealthiest districts may receive slight cuts in state aid, but the modified "grandfather" clause I have proposed should enable such districts to maintain their programs without crippling cutbacks.

One major difference between my bill and the Governor's budget proposal is my allocation of \$15.6 million for vocational edu-

cation. As difficult as the current fiscal crisis may be, we must make a start at providing meaningful education for the majority of our young people—those that do not go to college.

Several school aid bills have recently been introduced, not as serious funding proposals for 1971-72 but as discussion vehicles for future consideration in the continuing effort toward educational reform.

My Senate Bill No. 804 is a serious proposal for 1971-72, worked out to provide the most fair and effective allocation possible of the level of funding that seems likely to be available.

## Education Brings Special Responsibilities Says Detroit Judge

East Lansing—Educated persons have special obligations to the nation because their example will be followed by other elements of society, Judge Wade H. McCree told winter term graduates at Michigan State University.

"If you resort to extra-legal measures because of a policy or practice you dislike," he said, "you must be prepared to accept violent resistance by others to laws or practices which you may favor." McCree, judge for the sixth circuit, U.S. Court of Appeals in Detroit, advised "forebearance from violence" despite frustration over such issues as racial discrimination and the war in Southeast Asia.

"Violence invites resistance and counter force," he cautioned. McCree, also a prominent Detroit civic leader, delivered the address at MSU's recent winter where he was awarded an honorary doctor of laws degree.

## INDIAN EXHIBIT

A new exhibit at the Michigan State University Museum details more than 20,000 years of Indian history in nine dioramas ranging from a Paleolithic setting to the modern rural scene.



## ★ June Is Millage Month for Schools

If voters continue to vote no, June could be the month that will trigger the end of the property taxes that finance public schools.

June is millage election month, with most elections taking place on the 14th. And if school districts throughout Michigan suffer defeats as they have in recent years, action to reform property taxation will receive a big boost.

People generally agree that schools need money, but as voters, they are saying the method is wrong. Property taxes can no longer bear the burden.

Governor Milliken, in his recommendation for complete elimination of property taxes for school operation, has accurately reflected the mood of the property taxpayer. His request to the legislature would put this issue on a special election ballot in November, 1971. The proposal would eliminate property taxes as a base for school operating funds, but would permit up to six mills by vote of the people for special programs. It would also cut the six millage limit in the Constitution from the present 50 mills down to 30 mills.

The new base for school operating funds replacing property taxes would come from the state income tax. It provides a sound method of equitable taxation, paid by all citizens instead of just property owners.

A source close to the issue in Lansing said that if the legislature adopts a resolution to put the property tax issue on the ballot in the fall, perhaps voters would ease up and pass operational millage proposals, knowing it could well be the last year it would be necessary.

Of all the issues confronting society that seem helplessly beyond the grasp of the local citizenry, it is comforting to know that on this issue our governmental representatives will be attentively listening to the voter.

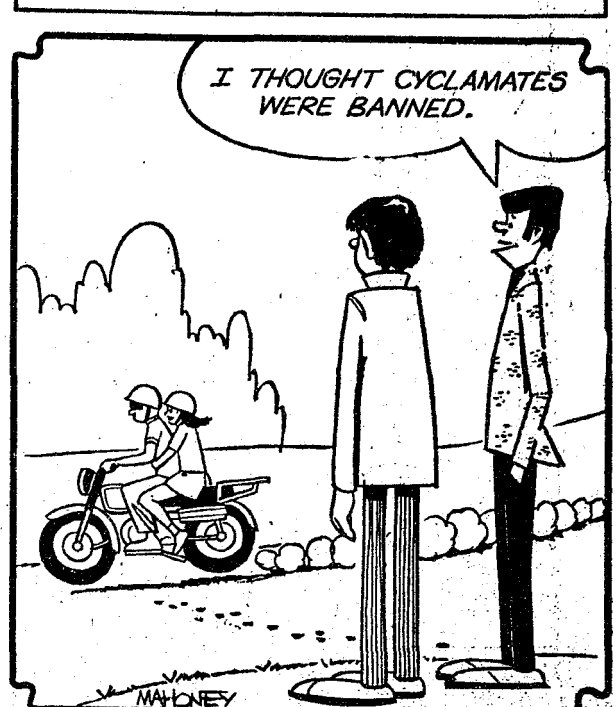
It will be an interesting twist for tax watchers to witness the predicted defeat of the dreaded rise in property taxes at the polls in a negative vote that eventually will bring positive yes results in total tax reform.

## INJUN

Tiger Pitcher Daryl Patterson is one-eighth Piate, a Shoshonean tribe of southwestern Utah. His Indian name is "Longfeather."

Telephone Your Club News To GR 5-3581

## HALF-PAST TEEN



## CROWD

The Tigers and Yankees played before a crowd of 58,369 on July 20, 1947, the greatest number of fans ever to see a Tiger game in Detroit.

Tiger Coach Art Fowler got his first chance in the major leagues after 10 seasons in the minors. He was a rookie at the age of 32.

Subscribe today to The Standard!

## CHELSEA JAYCEES ANNUAL AUCTION-RUMMAGE SALE

Coming Saturday, June 26  
AT THE CHELSEA FAIR GROUNDS

For Pick-Up  
Of Your Items Call

GLENN WEIR . . . 475-7509  
DAN EDER . . . 475-2663  
MITCH ZINK . . . 475-7912

No Glass, Please

## SUCCESSOR TO THE AUTOMATIC WATER SOFTENER

## THE REYNOLDS SOFT-SENSOR

THE WATER CONDITIONER THAT HAS A MIND OF ITS OWN FOR SOFT, RUST-FREE WATER

THAT'S RIGHT! Every night the Soft-Sensor "takes its own pulse." It recharges itself. If not, it checks itself the next night.

The Soft-Sensor recharges itself ONLY when it needs it, and always when it needs it.  
☐ All the soft water you need ☐ Simple, dependable construction  
☐ Saves self-maintenance cost ☐ "Lifetime" all-fiberglass tank  
☐ It "sleeps" when you're away from home ☐ Remarkably low in cost

PURCHASE OR RENTAL PLAN  
Other brands of water softeners can often be converted to the Soft-Sensor. Call our direct factory line without charge 1-800-552-7717 or call Ann Arbor 662-5676

The Reynolds Soft-Sensor is a product of:  
**REYNOLDS WATER CONDITIONING CO.**  
12100 Cloverdale Avenue / Detroit, Michigan 48204

Serving Washtenaw County with quality water conditioning products for 40 years

Need an apartment? Use a Standard Want Ad!

We Will Celebrate Our 25th

# Anniversary

the Week of June 14-19

STOP IN FOR  
**FREE COFFEE and DONUTS**  
**DOOR PRIZES**

Drawing Friday, June 18

Open Daily 7 a.m. to 5 p.m. Saturday, 7 a.m. to Noon

# FARMERS' SUPPLY CO.

ANTON NIELSEN

Across from the Depot, Chelsea

Phone 475-5551

# passbook interest rate

percent **DAILY INTEREST**

A passbook savings account at the Ann Arbor "FED" offers you several advantages. First, it earns the highest passbook interest rate in the city—approximately 1/2% more. Second, your savings earn from the day of deposit to the day of withdrawal. Third, your principal is not subject to the fluctuations of the market and accounts are insured to \$20,000 with the FSLIC. Fourth, deposits and withdrawals may be made at anytime. You're ahead when you save with the specialists.

**FEDS**  
**ANN ARBOR FEDERAL SAVINGS**  
the savings and loan specialists  
Liberty at Division, West Stadium at Pauline,  
Huron Parkway at Platt, Plymouth at Nixon.

Members: Federal Home Loan Bank System • Federal Savings and Loan Insurance Corporation







## + Services in Our Churches +

**ST. PAUL UNITED CHURCH OF CHRIST**  
The Rev. Warner Siebert, Pastor  
Sunday, June 13—  
Summer hours.  
9:00 a.m. to 9:45 a.m.—Worship service. Sermon title: "Sports-Minded Christians."  
9:20 a.m. to 10:15 a.m.—Church school.  
10:30 a.m.—Combined Choir rehearsal.  
Monday, June 14—  
9:30 a.m. to 11:30 a.m.—Vacation Church school.  
Tuesday, June 15—  
9:30 a.m. to 11:30 a.m.—Vacation Church school.  
1:00 p.m.—Needle & Thread.  
Wednesday, June 16—  
9:30 a.m. to 11:30 a.m.—Vacation Church school.  
Thursday, June 17—  
9:30 a.m. to 11:30 a.m.—Vacation Church school.  
7:30 p.m.—Board of Christian Education.  
Friday, June 18—  
9:30 a.m. to 11:30 a.m.—Vacation Church school.  
Youth Retreat at Tower Hill begins for three days.

**CONGREGATIONAL CHURCH**  
(United Church of Christ)  
The Rev. Daniel Kellin, Pastor  
Every Sunday—  
10:00 a.m.—Church school.  
10:00 a.m.—Morning worship.

**FIRST UNITED METHODIST CHURCH OF WATERLOO**  
Parks and Territorial Rds.  
Mrs. Altha Barnes, Pastor  
Every Sunday—  
9:15 a.m.—Morning worship.  
10:15 a.m.—Sunday school.

**ST. THOMAS EVANGELICAL LUTHERAN**  
The Rev. Daniel L. Mattson, Pastor  
Every Sunday—  
10:00 a.m.—Worship service.  
11:00 a.m.—Sunday school and Bible study.

**ST. MARY CATHOLIC CHURCH**  
The Rev. F. Francis Wahowiak  
Every Saturday—  
7:30 p.m.—Mass.  
Every Sunday—  
Masses at 6:30 a.m., 8:00 a.m., 10:00 a.m., and 11:30 a.m.

**ZION LUTHERAN CHURCH**  
Corner of Fletcher, Waters Rds.  
(Rogers Corners)  
The Rev. John R. Morris, Pastor  
Thursday, June 10—  
6:30 p.m.—Softball, Honeggers vs. Zion.  
Sunday, June 13—  
Summer worship schedule.  
8:30 a.m.—Sunday school.  
9:30 a.m.—Worship.

**ST. BARNABAS EPISCOPAL CHURCH**  
20500 Old US-12  
The Rev. C. Walton Fitch, Vicar  
Telephone 426-8815  
Every Sunday—  
9:15 a.m.—Holy Communion, first, third, and fifth Sundays.  
9:15 a.m.—Morning Prayer, second and fourth Sundays.

**FIRST ASSEMBLY OF GOD CHURCH**  
The Rev. Thode B. Thodeson, Pastor  
Every Sunday—  
9:45 a.m.—Sunday school.  
11:00 a.m.—Worship service.  
7:00 p.m.—Evangelistic service.  
Every Wednesday—  
7:00 p.m.—Midweek services.

**BETHEL EVANGELICAL AND REFORMED CHURCH**  
(United Church of Christ)  
Freedom Township  
The Rev. Roman A. Reineck  
Every Sunday—  
10:00 a.m.—Worship.  
10:00 a.m.—Sunday school.

**FIRST UNITED METHODIST CHURCH**  
The Rev. Olive Dickins, Pastor  
Sunday, June 13—  
10:00 a.m.—Worship service.  
Monday, June 14—  
8:00 p.m.—Council on Ministries meeting in Ed. Unit.  
Tuesday, June 15—  
Wesleyan Service Guild picnic at home of Mrs. Edwin Brown.  
Wednesday, June 16—  
12:00 p.m.—Sarah Circle potluck luncheon at home of Mrs. Harold Dresch.  
12:00 p.m.—Phoebe Circle potluck luncheon at home of Mrs. Ben Donaldson.  
12:30 p.m.—Ruth Circle potluck luncheon in Social Center.

**CHELSEA BAPTIST CHURCH**  
337 Wilkison  
The Rev. James Stacey, Pastor  
Every Sunday—  
10:00 a.m.—Sunday school.  
11:00 a.m.—Worship service.  
Nursery care available during all services.  
6:00 p.m.—Junior and Senior Baptist Youth Fellowship.  
7:00 p.m.—Evening worship.  
Every Wednesday—  
7:30 p.m.—Bible study and prayer meeting.

**ST. JOHN'S EVANGELICAL AND REFORMED CHURCH**  
(United Church of Christ)  
Rogers Corners  
The Rev. David J. Kleis  
Every Sunday—  
9:30 a.m.—Sunday school.  
10:30 a.m.—Morning worship.

**NORTH SHARON COMMUNITY BIBLE CHURCH**  
Sylvan and Washburn Rds.  
The Rev. William Enslin, Pastor  
Every Sunday—  
10:00 a.m.—Sunday school.  
11:00 a.m.—Worship service.  
6:30 p.m.—Young People's service.  
Every Wednesday—  
7:30 p.m.—Prayer meeting.

**FIRST CHURCH OF CHRIST, SCIENTIST**  
1883 Washtenaw Ave., Ann Arbor  
Sunday, June 13—  
10:30 a.m.—Sunday school.  
10:30 a.m.—Morning service.  
Lesson-sermon: "God, the Preserver of Man."

**GREGORY BAPTIST CHURCH**  
The Rev. Grant Lapham, Pastor  
Every Sunday—  
10:00 a.m.—Worship service.  
11:15 a.m.—Church school.  
6:30 p.m.—Baptist Youth Fellowship.  
7:30 p.m.—Evening worship service.

**SALEM GROVE UNITED METHODIST CHURCH**  
Every Sunday—  
10:00 a.m.—Sunday school.  
11:00 a.m.—Worship service.

**OUR SAVIOR LUTHERAN CHURCH**  
Rebekah Hall, 1194 M-52  
The Rev. William H. Keller, Pastor  
Every Sunday—  
9:15 a.m.—Sunday school and Youth Bible Class.  
10:30 a.m.—Worship service.  
Every Thursday—  
6:30 p.m.—Youth Confirmation Class.

**VILLAGE UNITED METHODIST CHURCH OF WATERLOO**  
8117 Washington St.  
Mrs. Altha Barnes, pastor  
Every Sunday—  
10:00 a.m.—Sunday school.  
11:15 a.m.—Morning worship.

**FIRST UNITED PRESBYTERIAN CHURCH**  
Unadilla  
The Rev. T. H. Liang  
Every Sunday—  
9:45 a.m.—Sunday school.  
11:00 a.m.—Worship service.  
Every Tuesday—  
8:00 p.m.—Choir practice.

**NORTH LAKE UNITED METHODIST CHURCH**  
Every Sunday—  
9:30 a.m.—Worship service.  
10:30 a.m.—Sunday school.

**CHURCH OF CHRIST**  
18661 Old US-12, East  
R. D. Parnell, Minister  
Every Sunday—  
10:00 a.m.—Church school.  
11:00 a.m.—Worship service.  
6:00 p.m.—Worship service.  
Every Wednesday—  
7:30 p.m.—Bible Study.

**ST. JOHN'S EVANGELICAL AND REFORMED CHURCH**  
(United Church of Christ)  
Francisco  
The Rev. Robert Townley  
Every Sunday—  
10:00 a.m.—Worship service.  
10:20 a.m.—Sunday school.

**ST. JACOB EVANGELICAL LUTHERAN CHURCH**  
12501 Riethmiller Rd., Grass Lake  
The Rev. Andrew Bloom, Pastor  
Every Sunday—  
9:00 a.m.—Sunday school.  
10:15 a.m.—Divine services.

**METHODIST HOME CHAPEL**  
The Rev. R. L. Clemans, Chaplain  
Every Sunday—  
8:45 a.m.—Worship service.

**CHELSEA MEDICAL CENTER**  
Every Wednesday—  
1:30 p.m.—Worship service.

**IMMANUEL BIBLE CHURCH**  
145 E. Summit St.  
The Rev. Frank C. Frinkle  
Every Sunday—  
9:45 a.m.—Sunday school, nursery provided.  
11:00 a.m.—Morning worship, nursery provided.  
7:00 p.m.—Evening service.  
Every Wednesday—  
Family hour, prayer meeting and Bible study.

**EXERCISE: GOOD**  
Exercise improves blood and cholesterol circulation, both important to maintain a healthy heart. The Family Fitness Council says a daily personal regime of exercise for 10-15 minutes is the basic requirement and recommends use of scientifically designed equipment such as slant boards, exercise bicycles, belt massagers and indoor joggers, which carry the FCC tag of approval.

## Guest Minister Will Speak at Assembly of God

Mr. and Mrs. Orval Johnston of Livonia are guest ministers of the First Assembly of God Church, 14900 Old US-12, this coming Sunday, according to pastor, the Rev. T. B. Thodeson.

## Heartworm Disease Found in Michigan Dogs

East Lansing — Heartworm, a common canine disease in warm climates, is becoming more common in dogs in Michigan and other northern states.

Although the disease was virtually unknown in Michigan 15 years ago, Michigan State University veterinarians now treat one or two cases a week at the MSU animal clinic.

Dogs afflicted with advanced heartworms are short of breath, cough and may collapse. Potentially fatal, the disease can be prevented through medication. Once contracted, successful treatment depends on the general physical condition of the dog.

**HOST CITY**  
Two All-Star games have been played in Detroit, in 1941 and 1951. Tiger Stadium will also be the site of the 1971 classic.

## Four Area 4-H Members Seek State Honors

Four local 4-H'ers will be competing for state honors during the 4-H Youth Exploration Days, June 29 through July 1. Named "District Tel-Award winners," based on their projects, and accumulative 4-H work were Arthur Sias, of Scio-Lodi Junior Farmers 4-H club, and Mary Jane Niehaus, Bonnie Powers, and Holly Powers, all of the Wide Awake Girls 4-H club.

Arthur Sias was awarded for his work in petroleum powers, small engines, and tractors, while Mary Niehaus was chosen in the field of dairy foods, Bonnie Powers in home design, and Holly Powers, commodity marketing.

District Tel-Award winners were chosen from the County Tel-Award winners selected in May of this year.

4-H officials also announced that Bonnie Powers will accompany a group of other Washtenaw county 4-H'ers to the Washington, D.C. Citizenship Short Course, to be held in the nation's capital July 4 through 10. She was selected through her interest in the program, and her participation in a county-wide orientation course. She is the daughter of Mr. and Mrs. H. Charles Powers, 12930 Scio Church Rd.

Michigan has a larger variety of commercial tree species than any other state, and its forest product industries contribute almost one billion dollars annually to the Michigan economy.

## For And About Teenagers



### THE WEEK'S LETTER:

I have this "boys" problem. I like a lot of boys but I like one very much. He acts like he likes me, but I'm not for sure. We have dated before but not much. I care a lot about him but also other boys. I mean, I don't want to be tied down to just one guy, but I also want to be sure I have a date every week-end. What can I do?

**OUT REPLY:** Your can't always have your cake and eat it too. You are wise to not want to be tied down to one boy, but you should realize there is no way you can be certain to have a date

every week-end. If you were a boy, you could continue asking girls until you found a date for every week-end. You cannot do that. But, if you are reasonably popular, as you seem to be, you will get plenty of dates as long as you are not "tied down" to one boy. Going steady will guarantee that you always have someone available—but it also means other boys will soon forget your telephone number.

If you have a teen-age problem you want to have discussed or an observation to make, address your letter to "For and About Teen-Agers," Community and Suburban Press Service, in care of this newspaper.

## WANTED CEMENT & BLOCKWORK

All types—Poured walls, floors, drives and foundations.

**CECIL CAUDILL**  
(517) 851-3847

# ANNUAL SCHOOL ELECTION

NOTICE OF ANNUAL ELECTION of the Qualified Electors of

**CHELSEA SCHOOL DISTRICT**  
WASHTENAW AND JACKSON COUNTIES, MICHIGAN  
To Be Held

**MONDAY, JUNE 14, 1971**

TO THE QUALIFIED ELECTORS OF SAID SCHOOL DISTRICT

Please Take Notice that the Annual Election of the qualified electors of said School District will be held

**MONDAY, JUNE 14, 1971**

in the Large Group Instruction Room of the Dwight E. Beach School.

THE POLLS OF ELECTION WILL OPEN AT 7:00 O'CLOCK A.M., AND CLOSE AT 8:00 O'CLOCK, P.M.

At said Annual Election there will be elected one (1) member to the Board of Education of said District for a full term of four (4) years, ending in 1975, and one (1) member for an unexpired term of one (1) year, ending in 1972.

THE FOLLOWING PERSONS HAVE BEEN NOMINATED TO FILL SUCH VACANCIES:

FOUR YEAR TERM	ONE YEAR TERM
Gerald J. Straub	Donald Baldwin
	Robert N. Schafer

Only resident qualified school electors who are registered with the city or township clerk of the city or township in which they reside are eligible to vote at this election.

The proposed Twenty-Sixth Constitutional Amendment to the United States Constitution reads in part as follows:

"Section 1. The right of citizens of the United States, who are 18 years of age or older, to vote shall not be denied or abridged by the United States or by any state on account of age."

Upon ratification of the proposed Constitutional Amendment by the 38th State, all residents of the school district who are registered with their respective city or township clerks and are 18 years of age or older shall be afforded the right to vote.

This Notice is given by order of the Board of Education.

Dated: June 4, 1971.

**HERMAN L. KOENN**  
Secretary, Board of Education

# YES

WE ARE MAKING  
LONG-TERM FARM  
REAL ESTATE  
LOANS

SEE US



P. O. Box 1006  
Ph. 769-2411 8645 Jackson Rd.  
Ann Arbor, Mich. 48108

# What makes our Fury automatic transmission better than any other automatic transmission?

## It's free.

Buy any specially-equipped Plymouth Fury V-8 and we can offer you the automatic transmission free.

Chrysler-Plymouth puts a lot of care into the building and engineering of their cars. And when you've got a good product, you go out of your way to get people to buy it.

They're doing that by not charging us for automatic transmissions on specially-equipped Furies. So we can now offer you an automatic transmission free.

Specially equipped? That means ordering your Fury V-8 with the optional equipment you'd probably order anyway:

Power steering, power disc brakes, Chrysler Airtemp air conditioning, AM radio, vinyl roof, white sidewalls and other specified items.

It's like shaving \$216.40\* off the price.

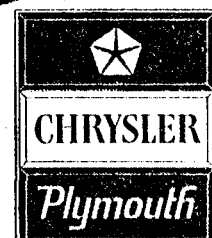
When you can cut the equivalent of \$216.40 off the sticker price of a sleek, roomy Fury V-8 you've got a great deal going for you. Act now. See us.

\*Based on manufacturer's Suggested Retail Price for TorqueFlite automatic transmission with standard V-8 engine.

AUTHORIZED DEALERS CHRYSLER MOTORS CORPORATION



Fury V-8 Coupe



Coming Through with more car, and more kinds of cars, within your price.

**G. A. SALES & SERVICE • 1185 Manchester Road**



## Baseball Team Names Welton 'Most Valuable'

Baseball awards were presented Wednesday evening at a spring picnic at the home of Ralph Brier, North Lake.

Coach Carl Genske presented the Bulldog players with their athletic letters earned this past season.

Most Valuable Player award was presented to pitcher Wayne Welton, while Joe Aspiranti was named the Most Improved player. Captains for the coming year will be Wayne Welton, and Randy Brier.

Welton, a junior, was also the only third-year letter winner on the team. Second-year letter winners include Dave Heydlauff, senior, and juniors Randy Brier, Dave Lukasiak, Todd Sprague, and Ron Sweeney. First-year awards were presented to juniors Joe Aspiranti, Steve Flint, Mike Rossbach, and Tim VanSlambrouck, and sophomores Jeff Daniels, and John Mann.

Coach Genske cited the assistance and efforts of Phil Barais, the junior varsity baseball coach. He also extended a special tribute to the custodians at the school who worked very hard all season to keep the ball field in good playing condition.

The season is not yet over for the Chelsea team, as they won the District Championship Monday evening, defeating Dexter, 10-0, for the title. They now must play Flat Rock Saturday morning at Northville, to qualify for the Regional finals to be held Saturday afternoon in Northville.

## Social Security Office Teleservice Can Take Claims

Robert A. Kehoe, district manager of the Social Security office in Ann Arbor, has announced that effective immediately the hours that the office is open for business are Monday through Friday, 8:45 a.m. until 4:45 p.m.

The office had previously remained open two additional hours on Mondays, until 6:45 p.m. Kehoe explained that with the adaptation of Teleservice, by which any Social Security claim may be filed over the telephone, the expense of the evening hours is no longer necessary.

People who work full time are invited to telephone the office at their convenience for an application by telephone. If a Claims Representative is not immediately available, the applicant will receive a return call as soon as possible. Kehoe suggested that for better service the public should avoid Monday to contact the office, as that is the day for heaviest in-office business and the longest delays.

For a claims application, or any other information about Social Security or Medicare, the telephone number of the Ann Arbor office, located at 220 E. Huron St., is 769-7100.

Over 85 percent of the water in the U.S. is hard enough to require treatment. The best way is with an automatic softener that conditions the water before it enters the piping system. In the modern unit, the water flows through a tank containing a chemical that removes minerals, such as iron and calcium. As the chemical is saturated, it's automatically regenerated. The unit requires almost no maintenance.

Calories in beef cuts such as round steak, sirloin tip roast, and T-bone steak, and in pork cuts such as loin roast, chops, tenderloin and baked ham, total under 250 calories per 3½-ounce serving of cooked lean meat.

## All-Conference Honors Won By Two Bulldogs

Wayne Welton, and Ron Sweeney were named to the All-South-eastern Conference baseball team this past week. Welton was the only unanimous selection on this year's team.

Bulldog catcher Randy Brier, and Joe Aspiranti both received honorable mention.

Other first team members are Roger Cash, South Lyon; Tom Van Wagner, Novi; Jeff Toburen, Dundee; John Pfeiffer, South Lyon; Jim Aseltine, Dexter; Pat Mattie, Dexter; Rick Detloff, Dundee; John Cunningham of Lincoln; and George Murray, South Lyon.

Second team members are Dennis Bishop, Saline; Fred Ternes, Dundee; Vince Givens, South Lyon; Rich Birch, Milan; Bob Wallace, Saline; Joe LaFleche of Novi; Fred McNulty of South Lyon; Denny Williams of Milan; Steve Bosak, Novi; and Gary Marion, Saline.

Honorable mention was given to Tim Mattie, Dexter; Dan Keller, Milan; Terry Leonard, Lincoln; Pete Slesky, Saline; Steve Ketola, Milan; Ed Bellers, Lincoln; Mike Hensley, Lincoln; Mike Lindemann, Saline; Chris Wall, Dexter; John Pantalone, Novi; Dan Roe, Dundee; and Dan Lavallo, Dexter.

## Junior High Notes

Student council elections were held June 3. Howard Salyer is the new president, while Craig Sprague is vice-president. Any seventh grader who is interested in becoming treasurer and secretary of next year's Student Council may apply at the Counselor's office.

Seventh grade band played a concert for North school, Thursday, June 3. On June 4, the eighth grade band played for South school.

Wednesday morning, June 9, the French classes went on a picnic in Pierce Park. The picnic took all morning.

This will be the last article for this school year. It is hoped that the readers have enjoyed reading my column as much as I have enjoyed writing it.

Steve Bennett,  
Beach school reporter.

## Control Measures for Destructive Nematodes Listed in Bulletin

East Lansing—What may be a hundredth of an inch long and cost U. S. crop and horticultural growers more than \$1 billion each year?

Nematodes. These normally invisible animals cost Michigan farmers millions of dollars in crop losses annually, often leaving farmers unaware of the cause, according to Dr. Charles Laughlin, Michigan State University nematologist.

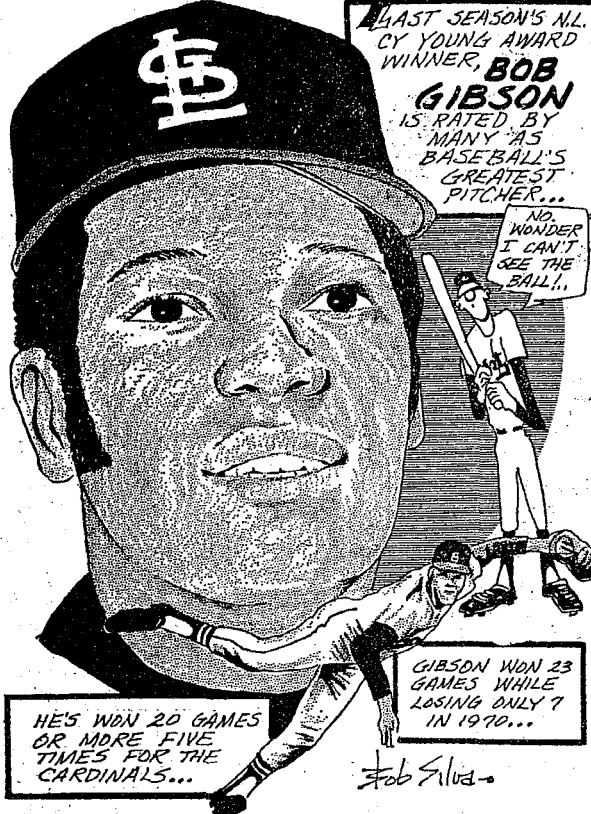
"Much Michigan farm land has been mislabeled 'exhausted' or 'tired soil', but nematodes were actually the cause of crop losses," says Laughlin.

A bulletin written by Laughlin, "Nematodes and Their Control," is now available from county Co-operative Extension Service offices and from: MSU Bulletin Office, P. O. Box 231, East Lansing 48823. (Single copies are free.)

The bulletin explains nematode feeding habits, injury symptoms, diagnosis of nematode diseases, how to determine nematode presence and recommended control.

Telephone Your Club News  
To GR 5-3581

## SPORTS CORNER



## Servicemen's Corner

### Airman Robert Baird Participates in Giant Amphibious Exercise

Navy Airman Robert E. Baird, son of Mrs. Gladis M. Baird of 525 N. Main St., Chelsea, Mich., was aboard the amphibious landing ship USS LaSalle participating in the major joint service exercise Exotic Dancer IV, off the North Carolina coast.

The three-week exercise, scheduled to end in mid-May, involved some 50,000 Army, Navy, Air Force and Marine Corps personnel divided into opposing forces. Large-scale assault operations took place in the Camp Lejeune area. They included air-dropped Army airborne units, Navy-Marine amphibious operations using helicopters, landing craft and close air support.

### Pinckney Youth Completes Advanced Infantry Training

Ft. Polk, La.—Private Alan T. Stevens, 24, son of Mr. and Mrs. William R. Stevens, 1236 Louise Dr., Pinckney, Mich., recently completed nine weeks of advanced individual infantry training at Ft. Polk, La.

During the course, he received guerrilla training and lived under simulated Vietnam conditions for five days, fighting off night attacks and conducting raids on enemy villages. He was taught methods of removing booby traps, setting ambushes and avoiding enemy ambushes.

Other specialized training included small unit tactics, map reading, land mine warfare, communications, and firing the M-16 rifle, M-60 machine gun and the 3.5-inch rocket launcher.

Pvt. Stevens received a BA degree in History in 1969 from the University of Michigan.

His wife, Christine, lives in Ann Arbor.

### Capt. Gene Owens Begins Duty in Spain

Torrejon De Ardoz, Spain—U.S. Air Force Captain Gene F. Owens, son of Mrs. Raymond Koch of 61 N. Lima Center Rd., Dexter, Mich., has arrived for duty at Torrejon AB, Spain.

Captain Owens, a security police officer, is assigned to a unit of the U. S. Air Forces in Europe, America's overseas air arm assigned to NATO. He previously served at Scott AFB, Ill., and has completed a 12-month tour of combat duty in Vietnam.

The captain, a 1957 graduate of Chelsea (Mich.) High school, received his BA degree in 1962 at Michigan State University. He was commissioned through Officer Training School at Lackland AFB, Tex.

Studies have shown that Mrs. Homemaker likes the total gourmet concept. She'll buy special cookware if it is displayed with a cookbook which contains a recipe that arouses her interest.

## Beer, Liquor Consumption Up

The State of Michigan's earnings from the sale, licensing, and taxing of alcoholic beverages increased by nearly five percent during the fiscal year that ended June 30, 1970, the Michigan Department of Commerce reports.

State Commerce Director Richard E. Whitmer said total income to state and local units of government totaled \$124.7 million, an increase of \$6.1 million compared to the previous year.

Whitmer said \$120.5 million of the net revenue went to the State of Michigan, and that \$4.2 million was returned to the cities, villages and townships for enforcement purposes.

The chairman of the MCD's Liquor Control Commission, Stanley Thayer of Ann Arbor, said the Commission's 92 retail-wholesale outlets sold 94 million bottles of all sizes of liquor and wine with an alcoholic content of more than 16 percent, an increase of nearly 3.7 million bottles.

Average sale price per bottle, before state taxes, was \$3.36, up six cents from the previous year. In Ann Arbor alone this past fiscal year, gross liquor sales were \$6,846,615, an increase of six percent.

Chili powder adds life to hamburgers, meat loaves and casseroles. Try one or two teaspoonsful in homemade barbecue sauce. Dried beans, peas and peanut butter make hearty and inexpensive dishes. Use milk or cheese in the meal to improve the quality of the vegetable protein.

Coat thick slices of banana with orange juice and roll in roasted, finely chopped almonds. Arrange with orange slices and clusters of grapes on salad greens.

Generously spread buttered toast fingers with finely chopped hard-cooked eggs mixed with mayonnaise. Arrange two whole Norway sardines, dove-tail, on each and top with a sliver of pimento.

Mix 2 tablespoons melted butter with a dash of onion salt and pepper, and 1 tablespoon lemon juice. Pour hot over 2 packages frozen asparagus. Serve at once.

## CHELSEA FINANCE CORP.

\$25 to \$1,000  
For Any  
Worthwhile Purpose

See or Call  
**FRANK HILL**  
at 475-8631

111 PARK STREET  
CHELSEA, MICH.

## HITCHINGHAM ELECTRIC

PHONE (313) 475-1100  
449 CHELSEA-DEXTER RD. CHELSEA, MICH.

RESIDENTIAL - COMMERCIAL - INDUSTRIAL  
LIGHTING and POWER

## Awards Given Boy Scouts of Troop 476

Boy Scout Troop 476 Court of Awards was held Monday, June 7 at 7:30 p.m. at South school. The troop's charter was presented to the troop committee chairman, Vern Hills, by Robert Daniels and Police Chief George Meranuck on behalf of the Kiwanis Club, sponsor of the troop.

Opening flag ceremony was presented by Lee Hafner carrying the American flag; Steve Schanz with the troop flag, and Tony Hafner, who carried the state of Michigan flag. Mike Stoner assisted.

Scoutmaster Charles Stoner conducted a tenderfoot investiture ceremony. Mike Rowe was present to be invested as a tenderfoot scout.

Vern Hills, troop committee chairman, presented second class badges to Robert Burgess and Dan Cobb.

Don Oesterle and Roger Policht received first class badges from Lloyd Hafner, awards chairman, and Lee Hafner received his star badge from assistant scoutmaster, Larry Poertner. Dave Heydlauff received a scout tie as assistant scoutmaster. Robert Daniels, committeeman, made the presentation. Committeeman Bill Baker presented the life badge to William Hafner.

Service pins were distributed by assistant scoutmaster Ray Worden to the following scouts: Curt Umstead, Jim Stahl, one year; Roger Policht, Don Oesterle, Doug Kalmbach, two years; Peter Pitz, three years; Tom Hepburn, Dennis Cosgrove, four years; Peter Stahl, Steve Worden, Rodney Branham, Jeff Daniels, and Bob Heydlauff, five years.

Perfect attendance pins were presented by Alvin Reinhardt, committeeman. Recipients were Jim Stahl, Mike Stoner, one year; Don Oesterle, two years; Tony Hafner, three years; Dennis Cosgrove, Tom Hepburn, four years; Peter Stahl, Bob Heydlauff, five years; and Dave Heydlauff, six years.

Awards chairman Lloyd Hafner presided during presentation of merit badges earned by the scouts. Merit badges in the field of first aid were awarded Dennis Cosgrove, Dave Heydlauff, Lee Hafner, and Bill Kalmbach. In the field of first aid and safety badges were presented to Don Oesterle, Mike Stoner, Steve Schanz, and Tony Hafner. Rodney Branham received a badge in first aid and cooking, while Robert Burgess was awarded a scholarship.

Ten badges for forage crops, camping, safety, first aid, gardening, farm arranging, corn farm-

## CUB SCOUT NEWS

PACK 455—June Pack meeting of Cub Scout Pack 455 was a picnic held Saturday, June 5, at Lyndon Park Area following a hike around the Winewanna Flood Waters. During the hike, the Cub Scouts picked up several bags of litter as qualification toward SOAR (Save Our American Resources) achievement badges.

Cub Scouts who participated are Jon Oesterle, Brian Lewis, Mike and Dave Waldyke, David Baldwin, Stratt Rademacher, Steve Kvarnberg, Leon Wheeler, Bill Burgess, Mark Schanz, Todd Miller, Chris Umstead, and David Hall, with Den Chief Don Oesterle of Webelos Den II.

Other recent activities of the dens of Pack 455 for which credit was earned on the SOAR patch included participation in a "Clean Chelsea" project; assisting Boy Scout Troop 476 in a waste paper drive; making bluebird houses and placing them in the Oak Ridge campgrounds on Sager Rd.; making bird feeders and planter boxes, planting trees and picking up litter as individual dens in addition to the general pick-up projects.

In addition to the Cub Scouts, those who attended Saturday's hike and outing included Dr. and Mrs. Jerry Waldyke, and family, Webelos leader Otis Titus, Cubmaster Duane Hall, Don Baldwin, who is committee chairman, and Emerson Wheeler, a committeeman; also den mothers, Mrs. Charles Burgess and Mrs. Sumner Oesterle. Others were Charles Burgess, Donald Umstead, Tony and Lloyd Hafner, and Donald Kvarnberg.

ing, agriculture, small grains, and farm records to William Hafner. Century patches for hiking went to Bob Heydlauff and Tom Hepburn for hiking 100 miles; Peter Stahl, for 200 miles; and William Hafner, 400 miles.

Charles Hafner presented Order of the Arrow badges for 15 days of camping to Dan Cobb, and Jim Stahl.

At the conclusion of the awards presentations, South school principal, Sylvester Wojcicki, Mrs. Gertrude O'Dell, and George Bauer each received a plaque from the awards chairman in recognition of their co-operation and assistance. Robert Fisher also received a plaque for his assistance as safety and first aid counselor.

It was announced that the troop has planned a canoe trip for June 18, 19, and 20. Scouts and leaders are to meet at South school at 6 p.m. Friday, June 18.

## from HISTORY'S SCRAPBOOK

DATES AND EVENTS FROM YESTERYEARS

The United States and Russia signed a mutual aid agreement, June 11, 1942.

Russian troops opened offensive action in Finland, June 12, 1944.

Congress passed a National Recovery Act, June 13, 1933.

A French plane flew from Maine to Spain in 29 hours, 52 minutes, June 13, 1929.

President Roosevelt froze German and Italian funds in the U.S., June 14, 1941.

The Magna Charter was issued by King John of England, June 15, 1215. George Washington was chosen as commander-in-chief of Continental forces, June 15, 1775.

The Hawaii annexation treaty was signed, June 16, 1897.

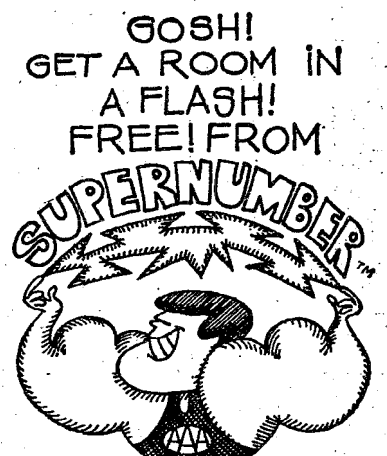
The first robot bomb hit London, June 16, 1944.

The cornerstone of the Bunker Hill Monument was laid by Gen. Lafayette, June 17, 1825.

## OLD SALOON

The box office for the restored Ford's Theater in Washington, D. C. originally was the Star Saloon. It was there actor John Wilkes Booth had a last drink before going to the theater next door to assassinate Abraham Lincoln.

Despite its location in Lake Superior, largest and coldest of the Great Lakes, Isle Royale National Park nurtures more than 30 types of orchids. The island also shelters one of the largest moose herds remaining in the United States.



800-336-0336

\*In Virginia call: 800 552-0386  
SUPERNUMBER™ to the rescue. Make toll-free room reservations in one fell swoop. Pick a hotel-motel with the symbol B from your trusty AAA Tour Book. Then call SUPERNUMBER and say you're a faithful AAA member. And ZAP! The nice person on the other end will make your reservations anywhere in the U.S.

RESERVATIONS

RAY JOHNSTON

Phone 769-5000

1200 S. Main St.

Ann Arbor, Mich.

## BOWL for the fun of it...



Having Fun Lately?  
Bowling Is a Ball!

Put some fun in your life . . . Bowl for laughter and health at our modern, well-equipped lanes with rarely a wait. Bring the gang down!

**CHELSEA LANES**  
1180 M-52 Phone GR 5-8141

**\*\$62 DOWN. \$62 PER MONTH. 36 MONTHS. FORD PINTO.**

\*The payment plan is based on the manufacturer's suggested retail price, a down payment of \$62.00, a cash price of \$1,964, and a total deferred payment of \$2,244 on approved credit. THE ANNUAL PERCENTAGE RATE IS 11.08%. State and local taxes, dealer preparation charges, if any, are extra.

**DON'T FORGET MAVERICK. \$71 DOWN. \$71 PER MONTH.\***

\*The payment plan is based on the manufacturer's suggested retail price, a down payment of \$71.00, a cash price of \$2,220 and a total deferred payment of \$2,536 on approved credit. THE ANNUAL PERCENTAGE RATE IS 11.08%. State and local taxes, dealer preparation charges, if any, are extra.

**NOBODY BEATS THE FORD TEAM**

**PALMER MOTOR SALES, INC.**  
CHELSEA, MICHIGAN



## Brenda Sizemore, Thomas Adams Speak Nuptial Vows

Brenda Gay Sizemore, daughter of Mr. and Mrs. Ophard Sizemore, Ypsilanti, and Thomas Adams, son of Mr. and Mrs. Robert Adams, Gregory, were married Saturday, May 22, at the Church of God in Ypsilanti. The Rev. G. J. Chandler officiated at the ceremony.

Linda Sue Sizemore, sister of the bride, attended as maid of honor, while Alan Hager, of Ann Arbor, was best man. Bridesmaids included Miss Trudy Birchfield, Ypsilanti; Miss Patricia Parks, cousin of the bride from Ypsilanti; and Mrs. James Gilmore, sister of the bridegroom, of Dexter. Others for the occasion were Dean Daniels, Ann Arbor; Dennis McMillan, North Lake; and James Gilmore, brother-in-law of the bridegroom, of Dexter.

A reception followed the ceremony at the Ford Motor Company, all in Ypsilanti, hosted by the parents of the bride. Debbie Fitzmaurice, cousin of the bridegroom, tended the guest book, while Janis McConnell, cousin of the bride, cut the wedding cake. Evelyn Sheen, cousin of the bride, poured punch.

Following a one-week trip to Niagara Falls, the newlyweds now reside at 5100 Mott Rd., Belleville.

The new Mrs. Adams is a graduate of Willow Run High School. Her husband is a 1966 graduate of Chelsea High School, and attended Sam's Technical School in Indianapolis. He is employed at Syco, Inc., as a technician.

### OPEN HOUSE

Open House was held Saturday evening for Linda K. Hale, daughter of Mr. and Mrs. A. J. Hale, in honor of her graduation from Chelsea High School. Approximately 100 guests attended the event, including out-of-town guests from Ohio, and Flint. Decorations were in blue and gold, the school colors.

### CHOSEN FOR GIRLS STATE

Karin Bergman, daughter of Mr. and Mrs. George Bergman, who attends John Glenn High School, Westland, has been chosen to participate in the 1971 Girl's State to be held in mid-June at the Eastern Michigan University Campus. A total of 500 girls from across the state will attend this event.

### SEEDLESS PICKLE

Michigan State University scientists have developed a seedless pickle.



**NANCY PARKER MONTAGNE**, daughter of Mr. and Mrs. Ralph Parker, Jr., of North Lake, graduated Cum Laude from Washtenaw Community College, June 5. She received her Associate Degree in Medical Office Specialist. A reception was held at the home of her parents to celebrate the occasion.

## WCC Graduates Receive Degrees At Commencement

At the June 5 Commencement Exercises of Washtenaw Community College, several Chelsea residents were conferred associate degrees in their chosen fields.

Listed among the WCC graduates were Elita Borders, Jr., of 210 North St.; Jeffery T. L. Crawford, 126 Wilkinson, who graduated with honors; Stephen Driskin, 302 W. Summit; Judith A. Hartman, 607 S. Main; Richard Kiel, 126 Wilkerson, and Martha A. Moore, 128 E. Middle St.

Stockbridge resident, Donald F. Henry, 18490 Farnsworth, was also included.

William Hughes, 16867 Waterloo Rd., was listed as having earned her associate degree in January 1971. She graduated with honors from Washtenaw Community College.

Mitch Picklesimer, 419 S. Main, and Thomas T. Smith, 6693 Linlame Rd., will earn their degrees by August, 1971.

In times of emergency, the Salvation Army is there to comfort and console. It reunites children and parents, finds housing for the homeless, brings food for the hungry and gives hope to the victims. They do all they can.

## Altar Society Seeks Photos for Church Directory

Monthly meeting of St. Mary Altar Society was held Monday evening, June 7, in the school gym, with 21 members and four guests present.

The Rev. Fr. Francis Wahowiak led the members in an opening prayer.

Altar Committee appointments for the summer months were announced. They are Mrs. Slocum, and Mrs. G. Atkinson, June; Mrs. A. Forner, July; Mrs. Dennis Guinan, and Mrs. L. D. Guinan, August.

Contact Lady, Mrs. Wayne Harvey, thanked the members for the wide selection of articles donated to the "Pope's Storehouse." Mrs. Harvey announced the approaching migrant workers drive. They are in need of clothing, canned goods, or money.

Mrs. Henry Rybka, church council representative, reported that a rummage sale will be scheduled in lieu of the May meeting.

A speaker from the Archdiocesan Christian Education office presented a program regarding future religious education.

Mrs. George Brettschneider announced that a bake sale will be held this Saturday, June 12, at the Sylvan Town Hall. The Parish Rummage Sale is scheduled for June 13 and 14 in the school gym.

A request is being made for pictures of the Altar Society activities to be included in the church directory, which is now being compiled. Anyone having such pictures, is requested to contact Mrs. Richard Bruck.

Meeting was closed with a prayer. Following the meeting, a program was presented regarding abortion.

Refreshments were served by Mrs. James Gaken, and her committee.

## Manchester High Alumni Holding Reunion Saturday

Manchester High School Alumni Association will observe its 94th anniversary reunion Saturday, June 19. Classes of 1921, 1946 and 1961 are being honored and the class of 1968 is planning a reunion.

A buffet dinner will be served at 7 p.m. in the high school gymnasium by Romanoff's of Ann Arbor.

The program will consist of a film production of "This Is My Country." This production was exhibited at the National Education Association Convention at Cobo Hall in Detroit where it won high critical praise. It is an entertaining and inspiring film.

Officers of the Alumni Board urge members to return their dinner reservations to Mrs. Walter Schaeble, Manchester.

If former graduates of Manchester High School have a change of address please forward same to Mrs. Philip Kern, Box 374 Manchester, so that records may be updated.

## Home Economics Study Groups Calendar

June 14 — Friendship Study Group, Gladys Boettner, 10630 Austin Rd., Bridgewater.

June 15 — Fostick, Mrs. George Drake, at 611 S. Ann Arbor Rd., Saline, at 6:30 p.m.

June 16 — Model Homemakers, Mrs. Florence Haas, 1035 N. Maple, Ann Arbor.

June 17 — Lodi Plains, Mrs. Marie Paul, Meet at Mrs. Oliver Steiner's at 11:30 a.m. for transportation.

### PALM TREES

Sixteen species of palm trees flourish in the United States, from North Carolina through Florida and the Gulf Coast States and inland to Texas, Arkansas, and Oklahoma, as well as California. Fourteen are native to this continent, the coconut and date palm were imported.

Telephones Your Club News To GR 5-8581

## Magic Mirror Beauty Salon

Open Monday thru Friday

9 a.m. to 9 p.m.

Saturday, 8 a.m. to 3 p.m.

PHONE 665-0816

## VILLAGE BEAUTY SALON

LORETTA PANNONE, Owner-Operator  
CINDY "EULA" JANICE - MARGE

107 N. MAIN

PHONE 475-5421

OPEN MONDAY THRU SATURDAY

Evenings, Wednesday and Thursday

## LAFF OF THE WEEK



## Letters to the Editor

To the Editor

At the Chelsea School Board meeting Monday, June 7, I submitted the following:

"As a Chelsea School District taxpayer, I hope the Chelsea School District as a governmental unit will be represented at the hearing June 30 and voice opposition to the proposed 4,000-acre Mill Creek Metropolitan Park which will lie entirely within the school district."

Our school district at present includes the bulk of the non-taxable state lands comprising the Waterloo and Pinckney Recreation Areas. We can ill afford now or in the future another 4,000 acres removed from the assessment base."

I encourage every concerned citizen and taxpayer of the Chelsea School District to request the School Board to submit a written opinion opposing the proposal to the Washtenaw County Metropolitan Planning Commission.

Robert N. Schaefer  
To the Editor:

As a pastor in the area, I would like to commend pastors Frank Frinkle of Immanuel Bible Church and James Stacey of Chelsea Baptist for their excellent stand against the replacement of the traditional baccalaureate service at Chelsea High School.

I am dismayed that certain men within the Chelsea Ministerial Association could possibly feel that a program of rock music would be more important than a message from God's Word. These are the days when God's men need to stand for God and be leaders of men. The graduating seniors of Chelsea High School stand at a crucial crossroad in their lives. If ever there is a need to hear a message from the Bible and receive direction from God, it is now. I cannot understand how men who claim to be called of God to preach the gospel and be leaders of God's people, can possibly by their action place more importance on rock music than a message from God's inspired Word.

I count it a privilege to be the pastor of some of the 1971 graduating class who know that purpose in life comes only with living for Christ. I hope that the members of the 1972 class who know the Lord personally as Saviour will stand up and replace the rock festival with a message from the Bible next year. I hope that the recent letters to the editor will make the students of Chelsea High School aware that there are still churches and men of God who stand for the truth of God's Word and the divinity of the Lord Jesus Christ.

Sincerely,  
Pastor William D. Enslin,  
North Sharon Bible Church.

### WHY A WILL?

The difference between making a will and leaving no will is obvious. When a will is made, the most important consideration is the intent of the maker. The court bears this in mind throughout probate proceedings. When no will is made, the court acts in the traditional notion that after death every person desires his property to go to his closest relatives.

The University of Michigan awarded 9,346 academic degrees during 1969-70, and has more than 260,000 alumni throughout the world, 103,000 of them in Michigan.

## Mrs. Leo LaFontaine Flies to California for Mothers Day Visit

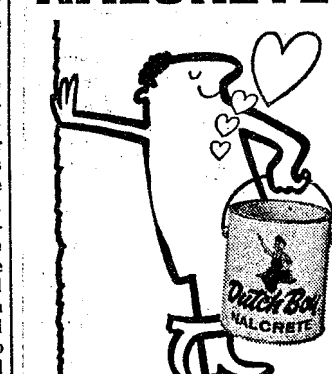
Mrs. Leo K. (Hollie) LaFontaine has returned to her home on South after flying to California to surprise her mother, Mrs. Elizabeth Cole, Rosemead, Calif., for Mothers Day while awaiting admission to the University of Michigan Hospital.

Mrs. LaFontaine enjoyed visiting her mother, relatives and friends in California even under very unpleasant health problems, hoping her stay in the hospital won't be for an indefinite period of time, as Mr. LaFontaine of the LaFontaine Construction is remodeling their home. Mrs. LaFontaine's favorite hobby being her garden and flowers this time of the year.

Then Sunday, June 6, Mr. and Mrs. LaFontaine's son, Cole, after learning of Mrs. LaFontaine's illness surprised them by flying in from Columbia, S. C., where he lives with his family. Mrs. LaFontaine says even though she has been flying all over the world for years, Mr. LaFontaine being a retired military man on diplomatic services and served as a career counselor for young men for his last ten years of service, that new 747 luxury liner is a beautiful airplane to ride and you are shown every courtesy while traveling ill.

Tiger Infelder Harvey Kuenn was chosen as the American League Rookie-of-the-Year in 1953.

## Dutch Boy NALCRETE



The stucco paint you'll be stuck on.

Nalcrete is formulated for the special problems of painting exterior masonry surfaces—whether they're stucco, brick, concrete, masonry block or asbestos siding. Resists cracking, blistering and peeling—stains wash off in the rain. Colors stay fresh no matter how bright the sun is. It's latex, too, so it's easily applied and everything cleans up with soap and water. If you have exterior masonry to paint, get economical Dutch Boy Nalcrete. You'll love it.

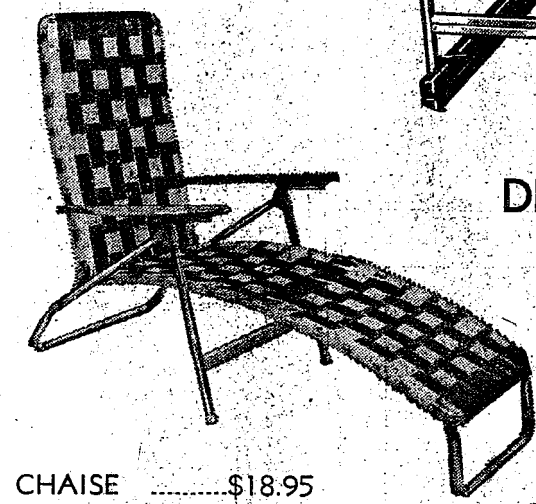


## MERKEL BROS.

Open Mon. & Fri. Until 9  
Phone 475-8621



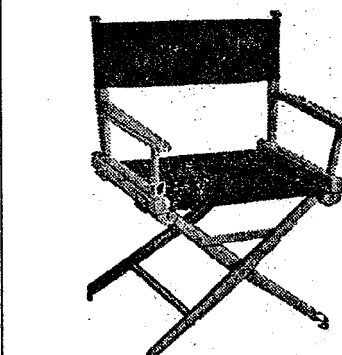
CHAISE .....\$49.95  
2-SEAT GLIDER \$69.95



CHAISE .....\$18.95  
LAY-FLAT .....\$21.95  
ROCKER .....\$15.95  
CHAIR .....\$10.95

## KING SIZE WEB

White with Walnut Trim  
CHAISE .....\$23.95  
ROCKER .....\$19.95  
HI-BACK CHAIR .....\$15.95



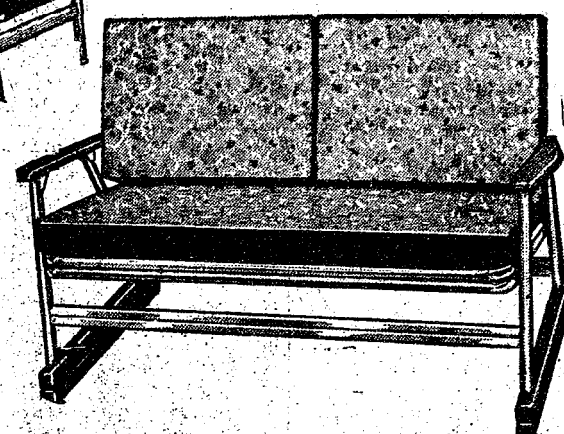
Lawn Umbrellas \$59.95  
Umbrella Tables \$24.95  
Coffee Tables \$13.95

## WROUGHT IRON

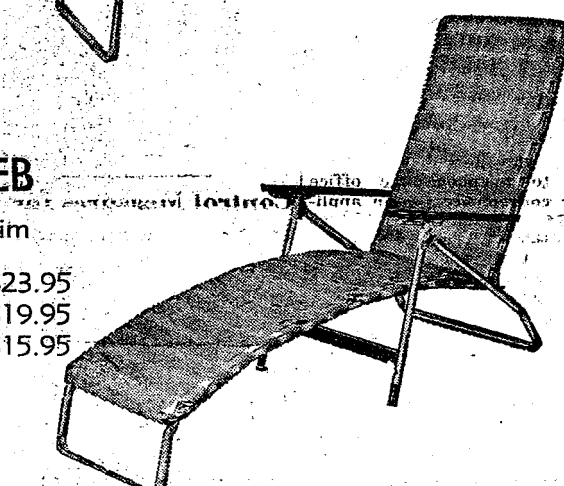
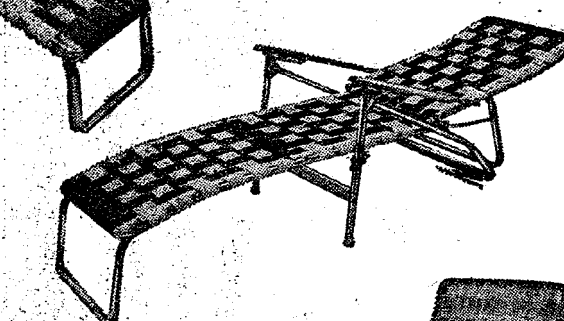
3-Pc. Cafe Set \$79.95  
5-Pc. Dining Set \$149.95  
4-Pc. Seating Group \$299.95  
Includes Sofa,  
Lounge Chair,  
End Table,  
Coffee Table.

## TELESCOPE FOLDING FURNITURE

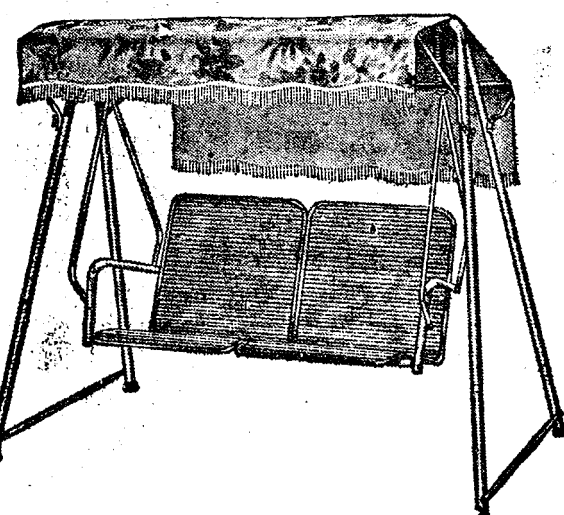
PADDED GROUP



DELUXE WEB GROUP  
Lime Green - Multicolor  
Natural Wood Trim



DIRECTOR'S CHAIRS  
WHITE FRAME  
COLORFUL CANVAS COVERS  
\$17.95



## Lloyd LAWN SWING

Enjoy your Summer with "air-cooled" comfort in this attractive 2-person swing. Resilient Lloyd Fibercraft open-weave seat and back—can stay out whether it rains or shines. Colorful floral patterned adjustable canopy of sun and water repellent vinyl—designed to last for many relaxing years.

Now just \$69.95

FIBERCREFT GLIDER .....\$69.95  
HIGH BACK SPRING ROCKER .....\$28.95  
LOW BACK SPRING ROCKER .....\$23.95  
COLORS: Parrot Green, Yellow

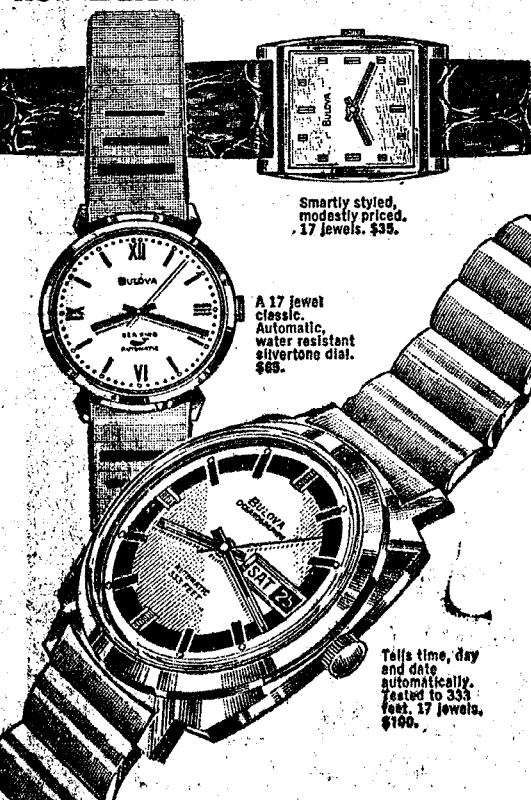
## Merkel

BEAUTIFUL HOME FURNISHINGS

Open Monday and Friday Until 9 Phone Chelsea 475-8621

## Remember Dad with a Bulova

On his day give him a gift he'll cherish for years to come...a handsome new Bulova watch.



## Winans Jewelry





ADMINISTRATIVE BUILDING at the school was completed nearly three years ago, and is an example of the school's transition from the former NYA camp-style buildings to a modern campus.

This facility houses the business offices of the administrative staff, and features a dental clinic and hospital, as well as visiting facilities, and a reception office.

## Unit Officers Named By UAW Local

Elections of officers of the various units within the UAW Amalgamated Local No. 437 were held this past month. All officers will assume their offices July 1. With only two elections remaining to be held, all other units have reported their new slate of officers.

Newly-elected officers of the Dana Production Unit are Harvey Morrell, chairman; Robert Keiser, Chuck Borst, Jerry Stephens, and Kandle Howard, bargaining

committee; Earl Willis, Jr., recording secretary; Paul Sawyer, sergeant-at-arms; Joe Scott, guide; John Peterson, skilled trades steward, first shift; Paul Schramm, skilled trades steward, second shift; John A. Clark, steward, first shift, south plant; Hershall Poe, steward, second shift, south plant; Calvin Poe, steward, first shift, gear and shaft, north plant; Ron Howard, steward, second shift, gear and shaft, north plant; Russ

sell Moore, steward, first shift, housing line, north plant, and Larry D. Adams, steward, second shift, housing line, north plant.

Dana Production Unit elections were held June 3.

Rockwell Standard officers were named June 4, including Ishmael Picklesimer, chairman; Paul Bauer, vice-chairman; Dorothy Wilcox, recording secretary; Roland Sager, production committeeman; and Earl Scott, Bob Knickerbocker, Mary Baize, Cligg Bolton, Jerry Picklesimer, Lyle Glenn, Roland Sager, Ray Johnson, Joe Keezer, Jake Shepherd, Betty Dorr, and Israel Shepherd, stewards.

A run-off election will be held Friday, June 11, to determine the skilled trades committeeman, and the steward of the light coiling department. Candidates for the first position are John LaRue (Little John), and Joe Cipta, while Roy Siegler, and Doug Myers are candidates for the second.

Elected May 13, Dana Office Unit officers are Esther Clark, chairman; Jill Shepherd, vice-chairman; Erma Johnston, secretary; and Beverly Wisniewski, alternate.

Chairman of the Central Fibre Unit, elected May 21, is Woodrow Gullett, while Joe Hadley is vice-chairman; Joe Gladstone, and Bill Rowe, bargaining committee; Gary Perry, chief steward, first shift; Eunice Anthony, chief steward, second shift; and David Blane, recording secretary.

At Fortune Industries, Myrna Salyer was elected chairman at their May 18 election. Bargaining committee for the coming year is Charles Rudd, and William Gonnely.

Unit elections for Federal Screw Products will be held Thursday, June 17, while Amalgamated Elections will be held Friday, June 18.

# New School Ready at Cassidy Lake

Cassidy Lake Technical School is richer by one more building, according to school superintendent L. C. Utess. The new building, which has just recently been completed, will house the school's complete academic, vocational and counseling programs.

Containing a total of 23,500 square feet, the all brick building was designed by Lansing architects Laitala, Nuechterlein & Fowler, and was constructed at a cost of \$930,000. Although in the past the men at the school have assisted in the construction of some of the school's buildings, this new facility was contracted by the O'Neal Construction Co., of Ann Arbor.

Cassidy Lake's program includes academic studies for grades 9 through 12, remedial education, counseling, and vocational training, including classes in auto services, welding, heating and cooling, appliance repair, and introduction to the "World of Work."

All of these services will be accommodated in the new school facility. Included in the building is a large library, study hall, and large auditorium, which will seat 75 persons. Counseling offices, and the principal's office, in addition to the regular academic classrooms, and vocational training centers are also featured.

Solid vocational training, and help in job placement from the probation and parole departments is one of the contributing factors for Cassidy Lake's rehabilitation rate, which is 65 to 70 percent, one of the highest in the nation.

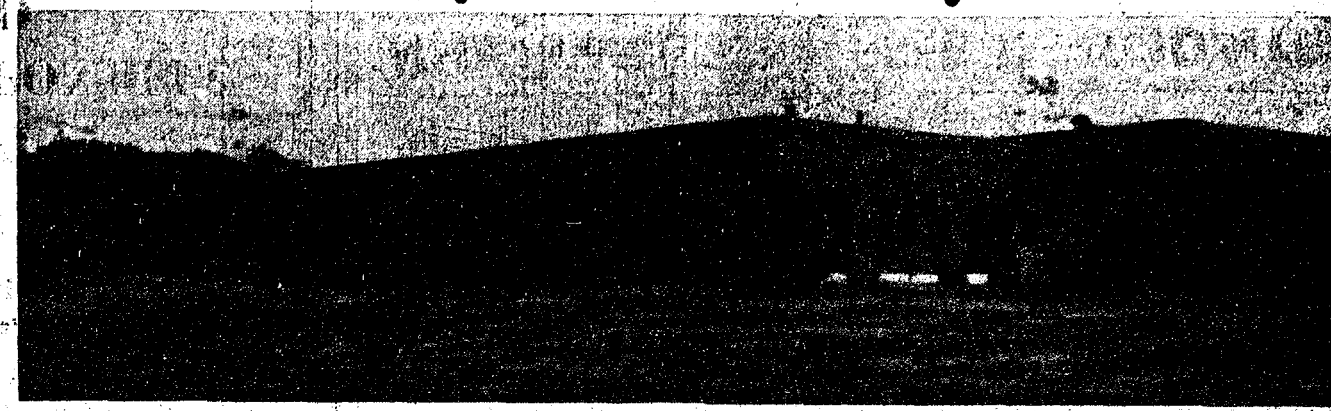
Highlight of the vocational training center is the auto maintenance room, which the men will learn all the basics of automotive servicing. School officials hope that the boys will eventually be able to put their newly-acquired skills to work by servicing state vehicles.

Heating and cooling will be taught in a room outfitted with air conditioning and heating equipment. The school is being assisted on the program by the Lennox Co., of Marshalltown, Ia.

Large appliances, such as washers and dryers, will be used to help the men learn the basics of appliance repair. The school is hopeful that this skill, and the other skills taught at the school will prove to be immediately needed, and will provide them with good jobs in the "outside world."

Among the smaller features of the building is the use, almost exclusively, of "Lexon" a new vandal-proof glass developed by the General Electric Co. which will not splinter, but appears clear. Also, the school is equipped with special door knobs, name plates, and other features so that blind, and other handicapped persons may be accommodated at the facility.

All the furniture at the school



NEWLY-COMPLETED SCHOOL BUILDING at the Cassidy Lake Technical School will house all academic and vocational learning, as well as counseling and remedial education services.

School officials hope to hold their first classes in the new structure by the end of next week.



SEEN FROM THE OTHER SIDE, the new classroom building is long and low. The one-floor structure is equipped with special

ramps, door plates, and door fixtures so that handicapped persons may be accommodated in the facility.

is prison made. Sold under the name "Michigan State Industries," it is made in the state's prison factories by other inmates, and is of a high professional quality.

Officials at the school hope to be holding classes in the new building by the end of next week. Already, equipment and furniture is being moved in, although not all of the vocational equipment has arrived yet.

Presently, the approximately 270 students at the school have been holding academic classes in the former NYA Craft Hall. Counseling services were conducted in the former residence of the assistant superintendent on the school grounds, while the various trade classes were scattered across the grounds in separate small buildings.

Of these smaller buildings, Superintendent Utess claimed, that some of them will be phased out, while others will be converted to other uses. The school plans to expand their crafts program and "re-convert" the former crafts hall back to its original purpose.

At present, there are only limited facilities for crafts at the school. A major milestone for the school will be passed July 1, as the school will have the first female corrections department teacher in the history of the state department of corrections. Coming July 1 to be librarian, and "media specialist" at Cassidy Lake is Mrs. Francella Wonders. Mrs. Wonders has been teaching at Kirtland Community College in the Grayling-Higgins Lake area, and has taught in the Gerish-Higgins public schools at Higgins Lake. She has a BS degree from Hillsdale College and an MS from Central Michigan University.

Mrs. Wonders will supervise the library and assist with the programmed learning at the school. She will also work closely with

the remedial reading instructor to She is, to his knowledge, the help develop the low reading skills first female instructor at a Michigan which the boys at the school tend to have, Utess claimed. Department of Corrections institute in the history of the state.

## Kurt Kinde Earns Degree at WMU

Kurt D. Kinde, son of the Rev. and Mrs. S. D. Kinde, Clio, is spending four months in Europe this summer, visiting Germany, Austria, Yugoslavia, Greece, Italy, Switzerland, and France. Last two months of his stay will be in the British Isles where he will join a group of students from Western Michigan University for study in London, and other cities, as a part of his work towards his Master's degree in English.

Kinde is formerly from Chelsea, having attended Chelsea schools through the eighth grades. He graduated from Northville High school, Northville.

State Motto: Si quaeris peninsulam amoenam circumspice (If you seek a pleasant peninsula, look about you.)

**JUNE 20**

**FATHER'S DAY**  
... is a family affair

SEE OUR GREAT  
FAMILY OF GIFTS  
FOR DAD BY  
**VAN HEUSEN**  
KNIT SHIRTS  
DRESS SHIRTS - SPORT SHIRTS  
**\$4.00 to \$9.00**

Puritan®  
Full-Fashioned Ban-Lon®  
Brookfair/\$10  
2 STYLES  
Mock Turtle or Button Collar

**English Leather®**  
ALL PURPOSE LOTION  
after shave...  
after shower...  
after hours...  
THE ALL-PURPOSE MEN'S LOTION  
\$2.95 \$3.95 \$4.95

**STRIETER'S MEN'S WEAR**  
"The Place To Go for Brands You Know"

(Political Advertisement)

## DONALD BALDWIN for SCHOOL BOARD

- ★ Assistant Plant Manager, North American Rockwell
- ★ President Village of Chelsea, 1966 through 1968
- ★ President of Chamber of Commerce, 1966
- ★ President, Community Chest, 1964-1965

**A VOTE FOR  
DONALD BALDWIN  
IS A VOTE FOR A RESPONSIBLE  
SCHOOL BOARD**

**MONDAY, JUNE 14, 1971**

**COOL COMFORT THIS SUMMER?**

## air condition now

**See Us for your Air-Conditioning Needs!**  
We have units for any need . . . from 5,000 BTU to 32,000 BTU  
WIDE SELECTION BY  
**GENERAL ELECTRIC & COMFORT-AIRE**

**5000 BTU Window Unit**  
By GE, with 2-speed fan and thermostat  
AS LOW AS  
**\$159<sup>95</sup>**

**DE-HUMIDIFIERS as low as . . \$84.95**

**FANS**  
Complete line  
as low as  
**\$8<sup>95</sup>**

**WHY SWELTER . . SEE US TODAY!**

## HEYDLAUFF'S

(Formerly Frigid Products)  
113 N. Main St., Chelsea Phone GR 9-6651